

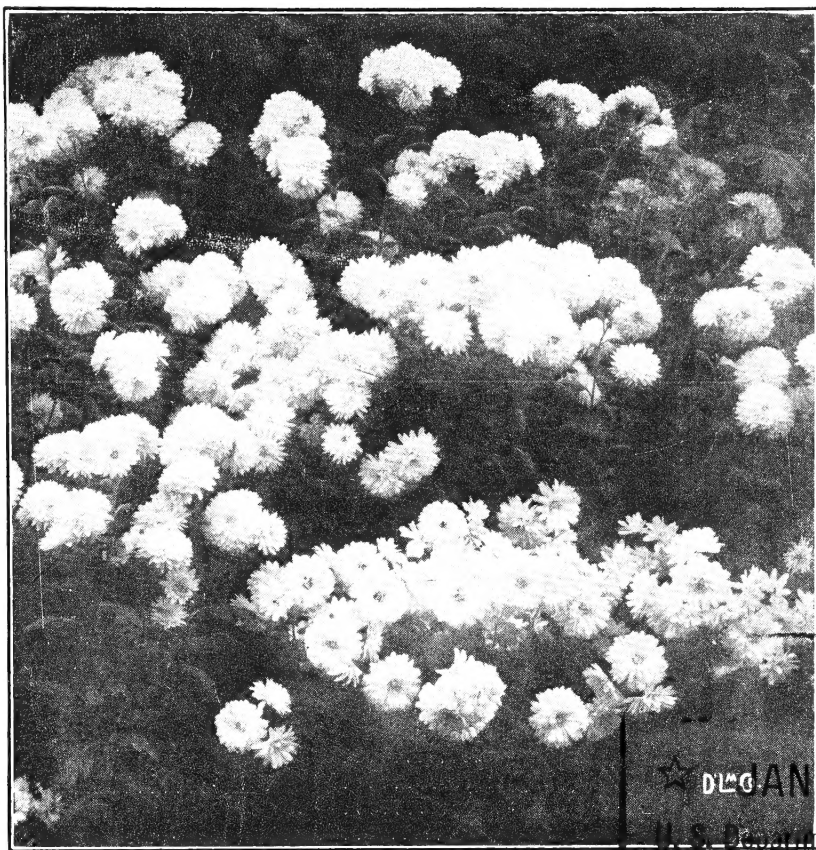
Historic, Archive Document

Do not assume content reflects current scientific knowledge, policies, or practices.

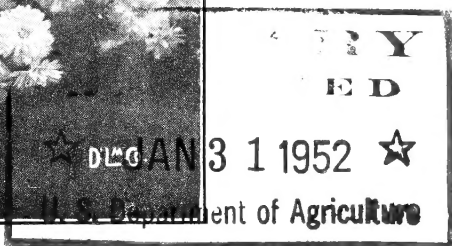


62.73

ch



Pompons



Fleck's

BETTER

Mums

FOR

1952

PHILADELPHIA'S ONLY

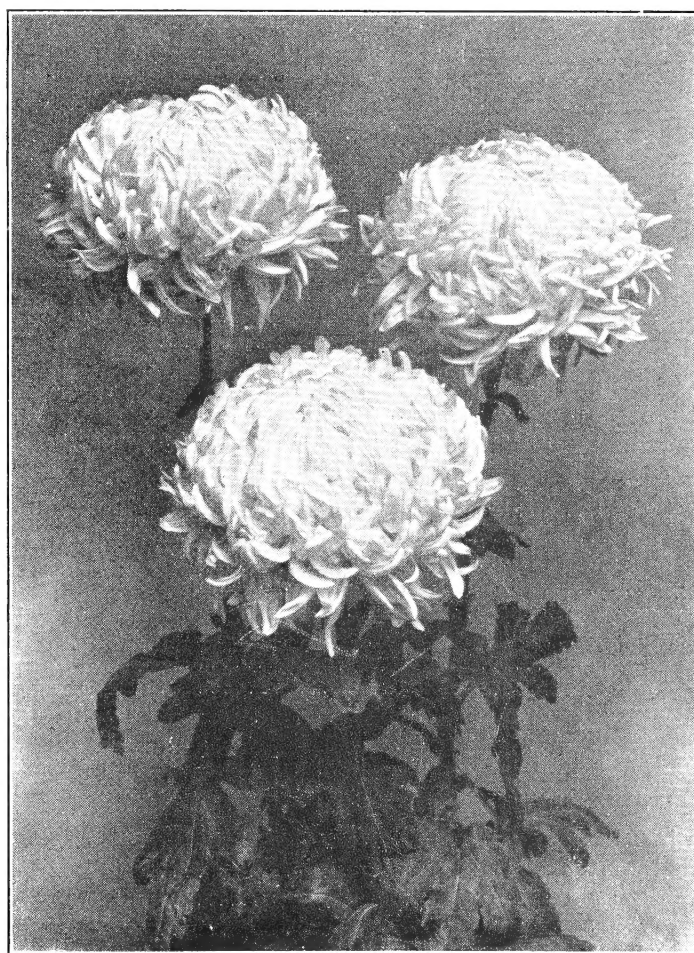
COMPLETE

ALL-WHOLESALE HOUSE

CATERING EXCLUSIVELY

TO PARTICULAR FLORISTS

AND NURSERYMEN



Standards

RAYMOND A. FLECK, Inc.

"The House of Friendly Service"

1042 Allengrove Street

Phone: JEFFerson 5-0568

**WAREHOUSES
PHILADELPHIA**

PHILADELPHIA 24, PA.

Phone Orders, 8:30 A.M. to 10 P.M.

Index

HARDY GARDEN VARIETIES

Variety	Page	Variety	Page	Variety	Page	Variety	Page	Variety	Page
A									
Achievement	20	Dark Jewell	3d cover	James Eadie	19	Old Gold	19	Silver Ball	19
Adagio	3d cover	Dawn Rose	3d cover	James Stewart	20	Olive Longland	3d cover	Silverplate	19
Air-Way Debut	20	Dee Dee Ahrens	18	Jewell	3d cover	Orchid Helen	20	Snowfall	18
Alert	3d cover	Defiance	19	Joybringer	3d cover	Orchid Spoon	3d cover	Spellbound	3d cover
Allegro	3d cover	Drifted Snow	18	Judith Anderson	19				
Amber Glow	20	Dr. Longley	20	K					
Ambrosia	20	Dream Girl	3d cover	Kathleen Lehman	20				
Argonne	3d cover								
Autumn Song	19								
Avalanche	18								
Avalon	20								
Aviator	20								
B									
Bambi	19	Early Bronze	19	L					
Bamboo	20	Early Gold	19	Lavender Lady	3d cover				
Barbara Small	20	Early Harvest	19	Lavender Lassie	20				
Beacon	20	Early Wonder	3d cover	Lee Powell	19				
Betty	3d cover	Early Yellow	19	Lemonade	19				
Bokhara	20	Elizabeth Hood	3d cover	M					
Bonfire	20	Enterprise	3d cover	Magnificent	20				
Brigadier	20	Ermine	18	Mahogany Cushion	20				
Bright Forecast	19								
Bronze Pyramid	20								
Burgundy	20								
Butterball	19								
C									
Calcite	18	Fairbow	20	Major Cushion	20				
Calico	20	Fashion	20	Mandalay	19				
Canary Wonder	19	Fiesta	20	Marionette	20				
Candlelight	18	Fireside	20	Masquerade	3d cover				
Capt. John Smith	3d cover	Flaxen Beauty	19	Mayford's Triumph	20				
Cardinal Spoon	20	Fragrant	18	Meditation	20				
Carmelita	20								
Carmine Queen	20								
Carnival	20								
Catherine Collins	19								
Champion Cushion	19								
Charles Nye	19								
Chippewa	20								
Chiquita	19								
Chris. Columbus	18								
Classic	19								
Commander Cushion	19								
Coral Sea	3d cover								
Courageous	20								
Cydonia	20								
D									
E									
F									
G									
H									
I									
J									
K									
L									
M									
N									
O									
P									
R									
S									
T									
V									
W									
Y									
Z									

GREENHOUSE VARIETIES

Variety	Page	Variety	Page	Variety	Page	Variety	Page	Variety	Page
A									
Acclaim	13	Barcarole	13	Br. Daisy	15				
Adagio	16	Beauregard	15	Br. Dot	15				
Adelaide	15	Beautiful Lady	17	Br. Frick	10				
Admiral	15	Belray	12	Br. Goldsmith	16				
Albatross	8	Betty Rose	17	Br. Linda Lou	15				
Ambassador	8	Betsy Ross	9	Br. Masterpiece	15				
Amber Bright	10	Bittersweet	15	Br. Minstrel	16				
Amberina	16	Blazing Gold	9	Br. Minuet	16				
Anaconda	10	Blueblood	15	Br. Mistletoe	10				
Apricot Queen	10	Bojangles	14	Br. Orchid Queen	10				
Apr. Valencia	16	Bon. Deluxe	9	Br. Princeton	15				
Arcadia	12	Bonton	15	Br. Riviera	16				
Argonne	16	Bourbon	16	Br. Supreme	16				
Aristocrat	11	Brandywine	14	Br. Thyra	15				
B									
Ballerina	17	Brigadoon	13	Br. Tuxedo	15				
Bamboo	15	Bright Forecast	13	Buccaneer	15				
C									
D									
E									
F									
G									
H									
I									
J									
K									
L									
M									
N									
O									
P									
Q									
R									
S									
T									
U									
V									
W									
X									
Y									
Z									

SEE OUR GENERAL CATALOG FOR SEEDS, BULBS, PLANTS, SUPPLIES, ETC.

INDEX (Continued)

<i>Variety</i>	<i>Page</i>	<i>Variety</i>	<i>Page</i>	<i>Variety</i>	<i>Page</i>	<i>Variety</i>	<i>Page</i>	<i>Variety</i>	<i>Page</i>
D		H		R		T			
Dk. Br. Masterpiece	15	Halo	12	Marionette	14	Rajah	15	Taffeta	17
Dk. Bulkeley	17	Harlequin	16	Marketeer	9	Rayonnante	11	Tally-Ho	14
Dk. Enchantress	17	Harvester	9	Mary Garden	11	Red Daisy	15	Thanks. Pink	11
Dk. Ind. Yellow	9	Harvest Golden	9	Mary Gold	14	Red Dot	15	Thelma	16
Dk. Linda Lou	17	Hasegawa Pink	17	Mary L. Hall	13	Red Princeton	16	The Titan	15
Dk. Orchid Queen	10	Heirloom	13	Mary McArthur	16	Red Rolinda	16	Thorobred	14
Dk. Pk. Dot	17	Helen Frick	11	Mason's Bronze	15	Red Rust	15	Thyra	17
Dk. Jewell	16	Heritage	17	Mason's Red	15	Red Seneca	15	Tobin's Yellow	10
Dk. Norma	17	Highbrow	12	Mason's Yellow	13	Red Surpeme	16	Topaz	16
Dk. Riviera	18	Highlander	14	Masquerade	16	Renown	11	Treasure	13
Dk. Pk. Supreme	17	Highland	14	Masterpiece	17	Rev. Bushnell	12	Tuxedo	17
Dk. Valencia	17	Hilda Bergen	10	Matchless	12	Revelation	13		
Dauntless	10	Holiday	16	Medallion	18	Revelry	14		
Dazzler	16	Honey Dew	9	Mefo	9	Reward	17	U	
Debonair	16	Horizon	11	Memorial	17	Richard Mandel	9	Usona	17
Debutante	17			Mermaid	17	Riviera	18		
Dec. Glory	9	I		Merrymaker	16	Robinhue	15	V	
Dec. Gold	14	Illini Bountiful	12	Meteor	10	Rodell Improved	13	Valencia	17
Dec. White	9	Illini Brave	14	Minong	12	Rosalind	18	Vesper	12
Defiance	18	Illini Burma	15	Minstrel	17	Rose Delight	11	Vibrant	14
Detroit News	10	Illini Camille	17	Minuet	17	Rose Masterpiece	17	Vivacious Lady	17
Detroit	15	Illini Gold	14	Miss Clarind	17	Rubicon	15		
Dreamboat	17	Illini Goldeup	13	Mollie Nicholson	10	Ruffled Supreme	17	W	
Dream Girl	16	Illini Honey	14	Monarch	12	Rusticon	16	Waikiki	11
Dynamo	12	Illini Redhead	16	Monument	9			W. H. Buckingham	17
		Illini Rye	13	Moonglow	12	S		Wh. Anemone	12
		Illini Snowdrift	12	Mrs. Dewey	15	Salmon Masterpiece	17	Wh. Chief	8
		Illini Starburst	13	Mrs. Kidder	9	Salmon Valencia	17	Wh. Doty	12
		Illini Warrior	16	Mrs. R. A. Walker	11	Salute	16	Wh. Freida	12
E		Ind. Bronze	10	Mrs. Roy	10	Samovar	15	Wh. Frick	9
Ecstasy	16	Ind. Golden Bronze	10	Mrs. Stahelin	10	Sarong	16	Wh. Mensa	12
Edith Roberts	17	Ind. Pink	10	Muto's Crimson	10	Satelite	13	Wh. Mistletoe	9
Ed. Seidewitz	11	Ind. White	9			Sch. Daisy	13	Wh. Norma	12
Enchantress	17	Ind. Yellow	9	N		Schweizerland	9	Wh. Pockett	9
Encore	12	Indian Head	16	Navaho	15	Sculpture	9	Wh. Popcorn	12
Eskimo	12	Irene	12	Nevada	12	Seafoam	12	Wh. Rayonnante	11
Europa	15	Ivanhoe	10	Nocturne	15	Seagull	12	Wh. Supreme	13
		Ivory Cameo	13	Nokomis	15	Seneca	15	Wh. Usona	12
				Nomago	11	Sequin	14	Wh. Valencia	12
				Norma	17	Serenade	16	Wh. Yuletide	12
				Norona	12	Shalimar	16, 18	Wilson's White	8
				Nosegay	14	Shamrock	14	Witchery	15
				Nuggets	13	Shasta	12		
						Shasta Daisy	12	Y	
				O		Silver Ball	12	Yel. Ambassador	9
				Oakdale	10	Silverplate	11	Yel. Arcadia	13
				Oak Leaf	10	Silver Sheen	8	Yel. Beauty	9
				October Bronze	15	Silversmith	13	Yel. Bergen	9
				October Pink	17	Siren	14	Yel. Cameo	14
				Omega	14	Sm. Late White	9	Yel. Cassandra	13
				Orchid Beauty	17	Sm. Superlative	9	Yel. Chattanooga	10
				Orchid Queen	10	Snow	13	Yel. Chief	9
				Orchid Valencia	17	Snowcap	13	Yel. Cordova	14
						Snow Cloud	12	Yel. Daisy	13
						Snowcrest	13	Yel. Dot	13
						Snowdrop	13	Yel. Doty	13
						Snowflurry	12	Yel. Fellow	14
						Snowline	9	Yel. Firebird	13
						Snow Queen	13	Yel. Irene	13
						Snow White	8	Yel. Lace	11
						Songster	12	Yel. L. I. Beauty	14
						Soprano	17	Yel. Mefo	9
						Spangles	13	Yel. Moeller	10
						Starbright	13	Yel. Monument	9
						Sterling	9	Yel. Nevada	14
						Sue Sally Jones	11	Yel. Pickett	9
						Sugar Plum	10	Yel. Priscilla	14
						Sunglow	9	Yel. Queen	9
						Sun Gold	10	Yel. Revelation	14
						Sunnyside	14	Yel. Riviera	14
						Sunray	13	Yel. Rolinda	14
						Sunrise	14	Yel. Sea Gull	13
						Sunup	13	Yel. Shasta	13
						Susanne Miller	14	Yel. Snow	14
						Swan	13	Yel. Snowcrest	14
						Sweepstake	13	Yel. Supreme	14
						Sweetheart	16	Yel. Swan	14
						Sylvanna	15	Yel. Usona	14
						Symmetry	14	Yel. Valencia	14
								Yolanda	16
				Q				Yukon	13
				Queen's Lace	11			Yuleflame	14
				Queen of Pinks	10				

Cultural Instructions

By **ALEX LAURIE**

Professor of Floriculture, Ohio State University

SOILS

A fibrous soil, well aerated by having granular structure and adequate amounts of organic matter, is necessary. The use of manure or peat at the rate of at least one-quarter by volume is desirable. Extremely heavy soils are benefited by inclusion of fine cinders (less than $\frac{1}{4}$ inch) or even sand together with the organic matter.

Acidity

Since Chrysanthemums do best in slightly acid soils, additions of lime are not recommended except in areas where extreme soil acidity exists. However, calcium is often low and in that case in slightly acid or neutral soils gypsum or calcium sulphate could well be added at the rate of 2 lbs. to 100 sq. ft. If available soils are alkaline an application of sulphur at the rate of 2 lbs. to 100 square feet will be found desirable. Since, however, this material is a slow acidifier, it should be added several weeks in advance of planting. A pH of 6-6.5 is best.

Levels of Nutrition

If soils are tested and they really should be, the following levels in parts per million (do not confuse these with pounds per acre) should be maintained: nitrates 10-25, phosphorus 5, potassium 20, calcium 150. It is well, however, not to have the nitrates high at the time of benching—10 p.p.m. is more than adequate then. High nitrates at the start check growth and are frequently responsible for the yellowing of foliage and stunted appearance. Heavy leaching in well drained soil will correct such a condition. Usually superphosphate should be added (5 lbs. to 100 square feet) at the time of soil preparation to insure a proper distribution of that material since surface applications are ineffective for a long time. For a short time crop, such as the Chrysanthemum, slowly acting bonemeal could well be eliminated from consideration.

Steam Sterilization

In this connection, it may be well to state that there is no necessity for the complete removal of soil from benches or beds every year. If the old soil is free of disease, its rejuvenation may be accomplished by the addition of one-fourth of the volume of peat and manure. This addition may be made at the rate of two-thirds peat and one-third well rotted manure. However, it is absolutely important that such soils be sterilized with steam. This serves a dual purpose. It destroys the verticillium wilt fungus and at the same time betters the structural condition of the soil.

Steam soil sterilization eliminates most soil pests such as nematodes, symphylids, worms, sow bugs, etc. It is to be preferred to changing soil both from the standpoint of control of pests and diseases and the actual betterment of growth. In addition it saves labor.

FERTILIZERS

Having applied the superphosphate and calcium if needed, either in the form of lime, if soil is acid, or gypsum if slightly acid or neutral, the balance of nutrients in the soil may be maintained by soil tests. Usually, however, two or three applications of a complete fertilizer (4-12-4) will be adequate, made after the plants are established in the bench and until color shows. All commercial fertilizers should be used at recommended rates (4-12-4 at 4 lbs. to 100 square feet) and applied when the soil is moist.

Excesses

Too much nitrogen causes poor growth and development of bright yellow leaves at the *top* of the plant. The nitrogen can only be removed from the soil by leaching and several heavy waterings may be necessary for this purpose. Incorporating chopped straw into the soil will reduce the nitrates by the action of micro-organisms decomposing the straw.

Excess phosphorus is rarely encountered. Too much potash burns the roots and is evidenced by browned leaf margins. Excessive calcium or lime causes the soil to become alkaline, and some of the elements become unavailable. To counteract alkalinity use sulphur at the rate of 2 lbs. to 100 square feet, or iron sulphate at half that rate.

Deficiencies

Lack of nitrogen causes the tops of the plants to lose their dark green appearance and the *lower* leaves to turn yellow, then brown, and cling to the plant. Lack of phosphorus causes the stems of the leaves (petioles) to turn purplish and in severe cases the veins of the leaf turn purple. Deficiency of potassium causes marginal browning of the lower leaves. This deficiency is similar in appearance to the burn from nicotine sprays or fumigations and confusion of the two is common. Either muriate or sulphate of potash at 1 lb. per 100 square feet corrects potash deficiency.

MULCHES

To maintain uniform moisture in the soil and increase growth, once the plants are established, a mulch may well be used. Peats are best, but manure, alfalfa hay, tobacco stems, spent brewers hops, may be used. In case of fresh, strawy manure or alfalfa an application of ammonium sulphate (1 lb. to 100 square feet) should be made at the time of mulching or soon after to avoid check in growth due to the initial withdrawal of nutrients from the soil as the mulches decompose. This is not necessary when peat, tobacco or hops are used, because of their slow rate of decay.

PROPAGATION

Three to four inches of sharp sand that is well drained is the most satisfactory rooting medium. Steam sterilization of the sand prevents damping-off, stem rot, and infection from verticillium wilt. Three to four-inch cuttings from stock plants should be firm and if soft enough to root rapidly removal of only a few lower leaves is necessary. Treatment with growth substances and bottom heat hastens rooting. Protection with paper or cloth the first few days prevents flagging. Cuttings should be rooted in two to four weeks. *Potting the unrooted cuttings in 2½-inch pots in light soil (2 soil and 1 sand), covering with cloth, syringing frequently, is new but very successful.* It saves one operation and plants so produced are soft and vigorous. No special attention is necessary other than syringing. Planting unrooted cuttings in the growing bench 8x8 inches is not recommended because of unsatisfactory results unless very closely watched. Do not propagate too early or the plants will become hardened between the time they are stuck as cuttings in the propagation house and the day they are planted in the bench.

Buying Cuttings

The trend now is to buy cuttings every year instead of attempting to carry over stock plants. There are a number of valid reasons for so doing. In the first place, few growers are either equipped or careful enough to produce *verticillium free* cuttings. This should be left to a specialist. Secondly, the space occupied by the stock plants could be utilized to better advantage. Third, propagation has to be done when you are busiest—in the Spring. In addition, unless stock plants are given adequate care, some varieties will die out and you will be taking cuttings from the remaining ones, even though these are not the kinds you need to grow. Your balance of colors, seasonal cut, becomes disturbed. So in general, most growers have found it more economical and satisfactory to buy cuttings as they are needed.

YOUNG PLANTS

Rooted cuttings may be potted in 2½-inch pots or placed directly in the bench where they are to be grown. The potted plants may be allowed to grow enough to take a top cutting from them, but they should never be allowed to become hard and pot bound. Loss of lower foliage upsets methods of pinching and such plants are hard and woody and require considerable time to develop new leaves.

PLANTING

The usual distance is 8x8 inches for Standards, Pompons, and Disbuds. Greater distance on strong spreading varieties may be necessary. For Standards one plant per hill is recommended, and they should be pinched to give two or three stems rather than use two or three plants per hill. The plants should be set so that there is a dish in the soil with the stem in the center of the dish. This practice facilitates spot watering, which is recommended until the plants have become established. Syringing of the foliage prevents wilting and helps the plant get started.

For early flowering the plants should be benched by the middle of May. Midseason and later varieties should be

planted from the last of May until July 1, except those which are shaded. Plants to be shaded should be benched by June 1 in order that sufficient growth is made to give necessary height before shade is applied.

WATERING

Profits or losses are often determined by the man with the hose. In the early stages spot watering around the plants is preferred to watering the entire bench. When the plants are well established, the bench should be given a heavy watering and this practice should be continued until maturity of the crop. When watering is done it should be thorough in order to insure wetting of all parts of the soil in the bench. The soil should dry in between waterings but the plants should never wilt. Steam sterilized soil requires more water than unsterilized soil. In steam sterilized soil the granulation of the soil permits rapid passage of water, and the soil in the bench is wet where the water traveled downward through the cracks and pore spaces, but the main body of the soil is not wet. *Failure of plants to grow in sterilized soil is due to insufficient watering to wet the soil and to wash through and leach out the nitrogen which often accumulates to toxic levels.*

TEMPERATURE

The Chrysanthemum is a cool season crop. During Summer maintaining a cool house is impossible, but overhead syringing helps to cool the plants. When the weather becomes cooler in the Fall a night temperature of 50 degs. F. is satisfactory. With late planting of late varieties such as Snow, which have not made sufficient growth to give the last pinch by August 1, the night temperature must be carried at 60 degs. F. until buds are visible to prevent blindness.

PINCHING

For many years the main object of pinching was to produce bushy plants with numerous stems. In some varieties such a procedure produced short stems and poor flower sprays; in others it was fairly satisfactory. In recent years the better growers have begun to pay more attention to the time of pinching to secure quality.

Dates will be found with the varieties listed.

DISBUDDING

When Standards are grown, either one, two, or three stems per plant, each stem must be disbudded to prevent development of side shoots. This should be done regularly when the shoots are long enough to be handled easily. Neglect will cause undue loss of time when operation is performed. Disbuds are handled the same as Standards. Pompons are not disbudded.

TAKING BUDS

Taking buds on Chrysanthemums is a process peculiar only to this plant. Taking the bud means allowing it to remain and removing all others. Two types of flower buds are produced on the Mum. The crown type appears first

and is distinguished by being surrounded by shoot buds which grow around it. Sometimes a second crown bud is produced. The terminal type of flower bud is always surrounded by flower buds. A safe rule to remember is never to "take" crown buds on early and midseason varieties that appear before August 15. If no crown buds appear on early or midseason varieties, the terminal bud is selected or "taken." With late varieties the terminal type of bud is always "taken."

If a crown type of bud is "taken" all vegetative or shoot buds should be removed. If it is too early to "take" the crown bud all vegetative shoots except the strongest one should be removed along with the crown bud itself. This process should not be delayed too long or crooked stems will result from the failure of the strongest shoot to grow straight. On terminal buds, all the side flower buds are removed when large enough to rub out.

SHADING

Since the Chrysanthemum is a short-day plant, the use of black cloth artificially shortens the day and induces earliness of flowering. Standards should be pinched 30-35 days before shading and they should be at least 15-18 inches high before shading. Pompons may be pinched just before shading. The black cloth should completely enclose the plants and is applied at 5 p.m. and removed at 7 to 7:30 a.m. Nothing is to be gained by allowing the cloth to remain over the plants for a longer period of time. Double duty may be secured by shading one bed beginning at 3 p.m. and leaving it on until sundown and then moving the cloth to another bed and removing it at 9 a.m. The cloth may be applied every night except one for each week, but continuous shading is preferred. When the buds of Standards are the size of a nickel or when Pompons show color, the use of black cloth may be discontinued. On the early varieties, flowers may be expected approximately 8 weeks after shading. Since Chrysanthemums set their buds normally around September 1 there is no point in *beginning* to apply black cloth after this date. The black cloth is supported by wires over the plants.

LIGHTING

To delay flowering, Chrysanthemums may be lighted. Reducing the house temperature to delay flowering impairs quality. Not all varieties respond favorably to light, and if carelessly and improperly used it may injure the crop. The last pinch should be made 10 days later than normal to prevent long necks and imperfect flowers. There are several methods of applying light. One is to begin applying light August 10-15 and run for 2½ hours each night beginning after dark. Use 40-watt bulbs, 3 feet above the tops of the plants, spaced 4 feet apart. Continue lighting for approximately the same number of days as is wished to delay flowering. To prevent heavy, clubby growth, keep the nitrogen level low and raise the temperature to 55 degs. F.

To spread the crop over a longer period, but not actually delay flowering, lights are applied after the buds are the size of a nickel. Use the same spacing and duration of light as previously described.

PEST CONTROL

Chrysanthemums are attacked by many insects and allied pests and these must be kept in check if high quality is expected.

Red spider attacks both leaves and flowers. When on the flowers very little can be done to control them without damaging the flowers. Use Vapotone.

Aphids are controlled by cyanide or nicotine fumigations. Nicofume at 1-400 is also effective with soap at 1 cubic inch per gallon or Santomerse Spreader at 1-1200 are used.

Thrips are troublesome, as they come in from weeds outside the greenhouse or under the bench. D.D.T. is very effective. A fine mist produced by high pressure should be applied to the upper surface of the foliage to thoroughly cover it.

Leaf roller must be controlled early before the foliage becomes too thick to cover it easily with insecticide. A dust of 15 parts lead arsenate and 85 parts sulphur is very good. Lead arsenate 2 lbs., and lime 2 lbs., in 50 gallons of water is useful before the foliage staining is objectionable.

Midge. Nicofume liquid at 1-400 with Santomerse Spreader is effective and is applied every third night for 7-8 applications. Do not apply the spray before 10 p.m. as the midge do not appear until night.

Foliar nematode is controlled by Nicofume liquid at 1-200 with Santomerse Spreader. The material must penetrate the leaf to kill the eelworm. Avoid water on the foliage as they spread through it.

Mealy bugs should be sprayed with Volck or Vapotone.

Soil pests including nematodes, symphylids, and grubs, are controlled by steam sterilization before planting. Once in the bench after planting, use Soilene.

Sodium selenate or P-40 are being recommended for the control of red spider, thrips, aphids and foliar nematodes. It is very worthy of trial and if used according to directions should eliminate all spraying and fumigation for the pests named above.

DISEASES

The most serious of these is *verticillium wilt*. This disease organism lives within the plant and no spray applied to the outside or any material placed on the soil will do any good. Short tip cuttings should be taken when the plants are growing rapidly or the cuttings purchased from reliable sources. All soil, pots and tools should be steam sterilized.

Stem rot is caused by infection in the propagation bench, too deep planting, or poor drainage.

Septoria spot can be controlled by spraying with 1 lb. of Ferradow and Santomerse Spreader at 1-1200. Bordeaux mixture is satisfactory but stains the foliage.

FLOWERS

Cutting of flowers before they are fully developed impairs the keeping quality. When Standards have expanded and the center is no longer green, they are ready. Pompons are ready when a majority of flowers are open. Pompons are usually sold in 9-oz. bunches.

CULTURAL INSTRUCTIONS (Continued)

HARDIES AS POT PLANTS

For the past several Springs, increasing numbers of growers have finished a batch of hardy or garden Mums in pots for Mother's Day. They are quickly (90 days) and easily grown, make showy and unusual pot plants. They have added sales appeal in that, after flowering, they may be planted outdoors for another crop of blooms in the Fall.

Here is a simple schedule worked out by William Skou at Ohio State: (For May 1 flowering)

VARIETIES—(Date after each variety is flowering date if above schedule is followed)

White		Pink	
Avalanche..... April 28	Pepita..... May 1	Joybringer..... May 2	September Cheer... May 3
Calcite..... May 7	Renown..... April 28	Major Cushion..... May 3	Serenade..... April 28
Chris. Columbus... May 7	Silverplate..... April 29	Apricot	
Classic..... May 1	White Wonder..... May 7	Calico..... May 1	Tiffany Rose..... April 28
Yellow		W. P. Snyder..... April 28	
Bamboo..... May 3	September Sunshine. May 3	Bronze	
Carnival..... May 7	Witchery..... May 3	Carmelita..... May 1	James Stewart..... May 1
Early Gold..... April 28	Yellow Christopher	Early Bronze..... April 28	Mona..... May 1
Early Yellow..... May 3	Columbus..... May 1	Orchid	
Gold Rush..... May 2	Yellow Spoon..... May 1	Jewell..... April 28	Spellbound..... April 28
Lemonade..... April 28	Yellow Supreme... May 10		

New Varieties for 1952

LARGE FLOWERING STANDARDS

WHITE

WILSON'S WHITE (Ian Wilson). Nov. 1. Intermediate incurved. Outstanding white standard for pots.

BRONZE and RED

NOMAGO (DePetris). Nov. 5. Bronze spider; the best of the bronze spider varieties.

YELLOW

DARK INDIANAPOLIS YELLOW (Yoder). Nov. 5. For pot plant use only. Somewhat shorter in growth habit than Ind. Yellow. 50 cuttings for \$3.50, 100-250, \$6.65 per 100; 300-450, \$6.30 per 100; 500-950, \$5.95 per 100; 1000-2450, \$5.60 per 100, 2500 up, \$5.25 per 100.

YELLOW MOELLER (Yoder). Dec. 3. Sport of Margaret Moeller. 50 cuttings for \$3.50, 100-250, \$6.65 per 100; 300-450, \$6.30 per 100; 500-950, \$5.95 per 100; 1000-2450, \$5.60 per 100, 2500 up, \$5.25 per 100.

POMPONS, SINGLES AND ANEMONES

WHITE

LYRIC (Yoder). Oct. 5. Pure white intermediate Daisy. Short, compact habit; very uniform and showy. An excellent early pot plant or fine dwarf garden type.

HORIZON (Yoder). Oct. 5. Pure white, intermediate Pompon. Stronger plant than White Wonder. Whiter and more double than Chris. Columbus. Larger, showier than Classic. An important early cut flower or landscape variety.

NORONA (DePetris). Oct. 15. White, medium, solid Pompon. Desirable for earliest shading under black cloth.

WHITE POPCORN (Yoder). Oct. 25. Cream white sport of Popcorn. No trace of pink in the flower at low temperatures. The most productive white Pompon.

KEEPSAKE (Yoder). Oct. 25. Cream white Pompon. About the size and form of Popcorn. Hard, durable flower. Taller and freer growth than Popcorn. For May through July in the greenhouse and August and September in the cloth house. Prompt and uniform response to shade.

Prices of all new varieties, except where otherwise noted:

50 cuttings for.....\$5.00	500-950 cuttings.....\$8.50 per 100
100-250 cuttings.....\$9.50 per 100	1000-2450 cuttings.....\$8.00 per 100
300-450 cuttings.....\$9.00 per 100	2500 or more cuttings.....\$7.50 per 100

NEW VARIETIES, POMES, etc. (Continued)

WHITE—Continued

- MADONNA** (Yoder). Nov. 5. Intermediate white Pompon of good clean growth. Precedes Encore. Its place is in the Spring program in May and June. Takes high temperatures well. Will show light pink tinges at low temperatures.
- DYNAMO** (Yoder). Nov. 10. White Pompon. Similar to Encore, but greatly improves that variety in growth habit. High quality cloth house, white Pompon. Fine in May and June in the greenhouse.
- SCULPTURE** (Yoder). Nov. 15. Large, ivory white Daisy. Excellent in May and June. Close to White Valencia for cloth house, responding faster and with considerably better production.
- ESKIMO** (Yoder). Nov. 15. Clear white Daisy. Fine form and excellent substance. Fine keeper.
- MONARCH** (Yoder). Dec. 1. Ivory white, large Decorative. Larger, harder flower than Cameo. Clean, vigorous growth.
- ACCLAIM** (Yoder). Dec. 5. Large, formal type Pompon. Clean Omega type growth, no laterals. Follows Paramount and Fortune. Lights and shades well.
- COTILLION** (Yoder). Dec. 5. Intermediate semi-formal Pompon. Very clear white. Heavily petaled, extreme substance. Short, easily controlled growth. Responds well and cuts uniformly.
- SNOWDROP** (DePetris). Dec. 8. White Button Pompon with uniform growth and good production.
- SNOW QUEEN** (DePetris). Dec. 10. Medium large formal Pompon of the purest white. Sprays produced on good stems are well flowered. It is not vegetative. Not recommended for shading.
- SATELLITE** (Yoder). Dec. 15. Ivory white, formal intermediate Pompon. Vigorous Silversmith habit. Brilliant under artificial light.

YELLOW

- GARLAND** (Yoder). Oct. 5. Intermediate yellow Daisy. Compact, vigorous growth. Garland has an exceptionally durable flower. A good early pot plant well adapted for gardens.
- TREASURE** (Yoder). Oct. 10. Small, yellow Pompon. Vigorous, upright habit. Fine cut.
- SUNUP** (Yoder). Oct. 28. Small, deep yellow Pompon. A little smaller than Gold Coast and larger than Pixie. Harder and more durable than Gold Coast. A good producer which withstands high temperatures and heavy cropping better than Gold Coast.
- BRIGADOON** (Yoder). Nov. 5. Bright, heavily petaled yellow Daisy. Excellent growth and production. Responds rapidly and uniformly. Wholesale shippers will welcome this type of Daisy. Good May through October.
- ILLINI RYE** (Univ. of Illinois). Nov. 12. Straw color intermediate Pompon. Exceptional substance and stem strength. Shades well.
- THOROBRED** (Yoder). Nov. 15. Large yellow Daisy. Good growth habit, fine production.
- PIPPIN** (Yoder). Nov. 20. Intermediate yellow Pompon. Follows Lollipop and precedes Sunnyside, easily making Thanksgiving. Variety produces heavily on compound sprays. Shades well and lights well. Very dependable.

YELLOW—Continued

- YELLOW PRISCILLA** (Neal). Nov. 23. Deep lemon yellow, sport of the all-time favorite Priscilla.
- GOLDENROD** (DePetris). Nov. 25. Full, round and solid yellow Pompon. Exceptional substance and keeping qualities. Can be kept on the plant for a long time without impairing the color, substance or form of the flower. Gives a heavy production of high quality sprays.
- HIGHLANDER** (Yoder). Nov. 25. Intermediate formal Decorative. Better production and freer growth than Goldsmith. Highly dependable for production and quality.
- YELLOW VALENCIA** (Yoder). Nov. 28. Sport of Valencia, formerly known as Golden Jane. 50 cuttings for \$3.00; 100-250, \$5.70 per 100; 300-450, \$5.40 per 100; 500-950, \$5.10 per 100; 1000-2450, \$4.80 per 100; 2500 up, \$4.50 per 100.
- NOSEGAY** (Yoder). Dec. 1. Small yellow Pompon. Lively, durable; grows and produces like Omega. Can be flowered from October to April.
- BRANDYWINE** (Yoder). Dec. 5. Deep orange yellow Decorative. Excellent growth habit, similar to that of Yuleflame. Season December through February.
- SYMMETRY** (Yoder). Dec. 5. Int. yellow Pompon. Stocky growth habit.
- JACK-POT** (Yoder). Dec. 5. Very large, golden yellow Decorative. A new peak in growth and form of flower has been achieved in this variety. It responds sharply and requires no disbudding. This variety approaches perfection in yellow Pompons.
- CORSAIR** (Yoder). Dec. 12. Large yellow Pompon. Outstanding for quality, vigor and production.
- YELLOW SNOWCREST** (Yoder). Dec. 15. Clear yellow sport of Snowcrest.
- REVELRY** (Yoder). Dec. 20. Intermediate light yellow Decorative resembling Yellow Revelation with an improved flower quality. A dependable, late, low temperature, productive variety.
- SUNRISE** (Yoder). Dec. 20. A yellow Pompon best described as a late Gold Coast. Sunrise is not sensitive to low night temperatures. A better growth habit than either Yellow Snow or Golden Anniversary.

BRONZE and RED

- FIRECRACKER** (Yoder). Oct. 5. Mahogany bronze Decorative, close to burnt orange. Tall, cut flower growth. The flower holds color well and is quite frost-resistant.
- BLUEBLOOD** (Yoder). Oct. 10. Deep amaranth red Decorative. Vigorous cut flower growth. Color strongly resembles that of the old variety, Burgundy.
- CARAVAN** (Yoder). Oct. 10. Large salmon bronze Decorative, garden type, compact rugged growth. Has all the good qualities of Mrs. Du Pont, with a strikingly new and useful color.
- ADMIRAL** (Yoder). Oct. 12. Dark crimson red Decorative. Plant is more vigorous and productive than Red Velvet; color is deeper and holds well.
- COCKTAIL** (Yoder). Oct. 15. Salmon orange Pompon—a beautiful color. Growth is slow, variety attains medium height. A new color and distinctive form. A cut flower variety.

NEW VARIETIES, POMS, etc. (Continued)

BRONZE and RED—Continued

- RAJAH** (Yoder). Oct. 15. Large, scarlet red Daisy. Very fine as cut flower. Holds color well in the field or early cloth house. Excels Red Daisy in color and growth habit.
- BUCCANEER** (Yoder). Nov. 1. Rich bronze Daisy with very little fading even under high temperatures. Fine growth and production. Darker and richer bronze than Buckskin or Sylvanna. This variety fills a long-felt need for a cloth house bronze Daisy with petalage and substance.
- ILLINI BURNA** (Univ. of Illinois). Nov. 10. Light bronze; large Pompon. Responds well to disbudding and partial disbudding. Satisfactory as a pot plant. Stiff stems and uniform, above average production.
- BRONZE LINDA LOU** (Yoder). Nov. 10. An important color sport of Linda Lou. 50 cuttings for \$4.00; 100-250, \$7.60 per 100; 300-450, \$7.20 per 100; 500-950, \$6.80 per 100; 1000-2450, \$6.40 per 100; 2500 up, \$6.00 per 100.
- GOLD BRAID** (Yoder). Nov. 12. A beautiful two-tone bronze Pompon. Fine from September 15 to November 15.
- SHALIMAR** (Yoder). Nov. 15. Lively orange bronze Anemone. Short, compact habit, well suited to pot plant culture or cut flowers. Sprays well or attains good size disbudded in pots. A useful improvement over Gypsy. A valuable variety to shade or delay.
- BRONZE PRINCETON** (Yoder). Nov. 15. Bronze sport of Princeton. Distinct from Red Princeton. 50 cuttings for \$3.25; 100-250, \$6.10 per 100; 300-450, \$5.85 per 100; 500-950, \$5.50 per 100; 1000-2450, \$5.20 per 100; 2500 up, \$4.85 per 100.
- THELMA** (DePetris). Nov. 20. Brilliant orange-scarlet Pompon. Excellent September 15 to Christmas. A beautiful red that never loses its brilliance. A sensation in the late cloth house.
- AMBERINA** (Yoder). Dec. 1. Bright orange-bronze intermediate Decorative. Vigorous, clean growth. A late Princeton with very high production. Responds well and grows dependably under most any temperature or light condition.
- DAZZLER** (Helm). Dec. 5. Coppery bronze, partial Anemone type. Seedling of Yellow Valencia and Crimson Glow. Strong growing variety and a color that blends well.
- HARLEQUIN** (Yoder). Dec. 10. Crimson red intermediate Decorative. Vigorous, wiry growth. Excellent low temperature variety. Fast, uniform response.
- CLARET** (Yoder). Dec. 15. A brilliant red Daisy for Christmas. A short, stocky growth. Requires minimum of 55-60 degs. F. night temperature for best development.

- TOPAZ** (Yoder). Dec. 15. Warm, orange bronze Single. Heavily petaled with good substance and vigorous, free growth.
- POINSETTIA** (Yoder). Dec. 20. Scarlet red, large Daisy. Strong growth. Needs no disbudding. Attains the size of the Valencias on natural sprays. Responds uniformly, takes low temperatures well. Important addition to the Christmas season.

PINK

- COURTIER** (Yoder). Oct. 10. Lavender pink Decorative. Garden type, compact growth. Beautiful color and form. A Spellbound that is frost-resistant. Good as an early pot plant.
- LASSIE** (Yoder). Oct. 10. Large, dark pink Decorative, similar in size and form to Lavender Lady. A strong, upright habit, well-suited to cutting.
- MISS CLARINDA** (Holmes). Nov. 10. Light lavender shading darker toward center. Color and flower size resembles the variety, Mrs. Bulkeley, but production and growth is far superior.
- PANDORA** (Yoder). Nov. 10. Large, luminous pink Decorative. Excellent size and form. Growth is vigorous, with short timing giving best results. Well suited to Spring and cloth house flowering.
- MEMORIAL** (Yoder). Nov. 12. Intermediate pink Anemone. Excellent spray and growth. Improves the variety, Linda Lou, in substance, color and growth. Recommended April through November. Holds color well.
- MERMAID** (Yoder). Nov. 15. Intermediate pink Daisy. An excellent variety to follow Reward. Fine growth and production. Holds color well.
- GRAND SLAM** (Yoder). Nov. 20. Brilliant silvery pink Daisy. Large flower, wide, stiff petals. The variety responds well to shade. Growers will enthuse over its quality and production. Retailers will find in it the nearest color to a shell pink Aster yet found in the Chrysanthemum.
- VIVACIOUS LADY** (Helm). Nov. 20. Spoon type novelty. For growing in sprays as well as disbuds.
- PRINCESS** (Yoder). Nov. 25. Small pink Pompon. Lively color; hard, well rounded flower. Growth and production nearly identical to Snowflurry. Responds more uniformly.
- HERITAGE** (Yoder). Dec. 1. Large, formal dark pink Pompon. Free, vigorous growth, good production. Improves the production of Minuet and responds more uniformly than Riviera or Minstrel.

Prices of all new varieties, except where otherwise noted:

50 cuttings for.....	\$5.00	500-950 cuttings.....	\$8.50 per 100
100-250 cuttings.....	\$9.50 per 100	1000-2450 cuttings.....	\$8.00 per 100
300-450 cuttings.....	\$9.00 per 100	2500 or more cuttings.....	\$7.50 per 100

INSTRUCTIONS FOR ORDERING

The minimum total order that can be accepted is 500 cuttings.

Fifty of each variety is the minimum that can be supplied.

More than 50 of a variety must be in multiples of 50.

Orders must be marked with a definite delivery date. The date you want to receive them.

In writing your order, please use special alphabetically arranged order blanks enclosed with this catalog.

SUBSTITUTIONS

We will substitute varieties as good or better for any items not listed in this catalog unless order is marked **No Substitutions.**

SHIPPING INFORMATION

Special shipping instructions and address if different from your regular mail address should be shown on your order.

All cuttings are shipped Railway Express, Air Freight or Air Express, collect. If you have any preference, designate on your order; otherwise our shippers will use their best judgment. Cuttings are in perfect condition when they are accepted by the transportation company. Therefore, if there is any damage enroute from being broken, heated or frozen, **CALL YOUR EXPRESS or AIR FREIGHT AGENT** to inspect the shipment upon arrival, marking on express receipt or bill of lading the condition of the package and amount of damage, etc. **YOU MUST FILE CLAIMS**, as our responsibility ceases when the carrier accepts shipment. We cannot be responsible for the safe arrival of your cuttings.

LIMITATION OF WARRANTY

We, Raymond A. Fleck, Inc., warrant, to the extent of the purchase price, that seeds, plants or bulbs sold are as described on the container, within recognized tolerances. We give no other or further warranty, express or implied.

IMPORTANT:

**Absolutely No Changes on Your Order Can be Accepted
Within 30 Days of Delivery Date**

Large Flowering Standards

Types are abbreviated as follows: Inc.—Incurved; Ref.—Reflexed. Size of flower is indicated by S—Small; M—Medium; L—Large.

s—Indicates varieties we find most suitable for shading; *p*—Indicates varieties suitable for pot plants.

Pinching and flowering dates given here are for normal flowering without shading or lights.

Note carefully instructions for ordering. No orders for less than 500 rooted cuttings of a variety accepted. Minimum total order, 500 cuttings

WHITE

Name and Description	Pinch	Matures	50 per 50	100-250 per 100	300-450 per 100	500-950 per 100	1000-2450 per 100	2500 up per 100
8-Week Varieties								
<i>s</i> Silver Sheen. M. Inc.....	7-8	10-20	\$2.75	\$5.20	\$4.95	\$4.65	\$4.40	\$4.10
White Chief. Sport. M. Inc.....	7-8	10-20	3.50	6.65	6.30	5.95	5.60	5.25
Christina. S. Inc.....	7-14	10-23	3.50	6.65	6.30	5.95	5.60	5.25
9-Week Varieties								
<i>p</i> Ambassador. Cream white. L. Inc.....	7-14	10-25	3.00	5.70	5.40	5.10	4.80	4.50
<i>p</i> Granite State. Pure white. S. Inc.....	7-12	10-25	2.75	5.20	4.95	4.65	4.40	4.10
Albatross. Pure white. M. Inc.....	7-14	11-1	3.00	5.70	5.40	5.10	4.80	4.50
<i>p</i> Snow White. L. Inc.....	7-14	11-1	2.75	5.20	4.95	4.65	4.40	4.10
<i>p</i> Wilson's White (New). M. Inc.....	7-16	11-1	5.00	9.50	9.00	8.50	8.00	7.50

LARGE FLOWERING STANDARDS (Continued)

WHITE (Continued)

Name and Description	Pinch	Matures	50 per 50	100-250 per 100	300-450 per 100	500-950 per 100	1000-2450 per 100	2500 up per 100
10-Week Varieties								
<i>s</i> Betsy Ross. Ivory white. L. Inc.....	7-16	11-5	\$3.00	\$5.70	\$5.40	\$5.10	\$4.80	\$4.50
<i>ps</i> Indianapolis White. M. Inc.....	7-20	11-5	3.00	5.70	5.40	5.10	4.80	4.50
<i>p</i> Richard Mandel. White. S. Inc.....	7-19	11-5	3.00	5.70	5.40	5.10	4.80	4.50
Jean Elizabeth. L. Semi-Inc.....	7-20	11-10	3.25	6.15	5.85	5.50	5.20	4.85
Monument. Ivory white. L. Inc.....	7-20	11-10	3.00	5.70	5.40	5.10	4.80	4.50
White Pockett. Exhibition type.....	7-20	11-10	3.25	6.15	5.85	5.50	5.20	4.85
11-Week Varieties								
Sterling. White. L. Inc.....	7-25	11-15	4.00	7.60	7.20	6.80	6.40	6.00
<i>sp</i> Marketeer. M. Inc.....	7-25	11-18	3.00	5.70	5.40	5.10	4.80	4.50
<i>s</i> Mefo. Ivory white. L. Inc.....	7-24	11-20	3.00	5.70	5.40	5.10	4.80	4.50
<i>p</i> White Frick. White suffused pink. M. Inc.....	7-24	11-20	3.00	5.70	5.40	5.10	4.80	4.50
12-Week Varieties								
Chattanooga. L. Inc.....	7-28	11-25	2.75	5.20	4.95	4.65	4.40	4.10
December Glory. Ivory white. M. Inc.....	7-31	12-1	3.00	5.70	5.40	5.10	4.80	4.50
Margaret Moeller. White. L. Inc.....	7-31	12-3	3.00	5.70	5.40	5.10	4.80	4.50
13-Week Varieties								
December White. M. Inc.....	7-31	12-5	3.25	6.15	5.85	5.50	5.20	4.85
White Mistletoe. M. Inc.....	7-31	12-5	3.25	6.15	5.85	5.50	5.20	4.85
Snowline. Showy white flower. L. Inc.....	8-1	12-10	4.50	8.55	8.10	7.65	7.20	6.75
Smith's Late White. Ivory white. M. Inc.....	8-4	12-15	3.25	6.15	5.85	5.50	5.20	4.85

YELLOW

8-Week Varieties

<i>p</i> Harvest Golden. Deep gold. M. Inc.....	7-10	10-10	\$4.00	\$7.60	\$7.20	\$6.80	\$6.40	\$6.00
<i>p</i> Celestra. Lemon yellow. S. Inc.....	7-8	10-15	3.00	5.70	5.40	5.10	4.80	4.50
<i>p</i> Gold Lode. Golden yellow. M. Ref.....	7-8	10-15	2.75	5.20	4.95	4.65	4.40	4.10
Yellow Chief. Sport. M. Ref.....	7-8	10-15	2.75	5.20	4.95	4.65	4.40	4.10
Butterball. M. Inc.....	7-8	10-20	3.50	6.65	6.30	5.95	5.60	5.25
<i>p</i> Mrs. Kidder. Deep lemon yellow. M. Inc.....	7-8	10-20	2.50	4.75	4.50	4.25	4.00	3.75
<i>sp</i> Blazing Gold. Deep gold. M. Inc.....	7-14	10-23	3.00	5.70	5.40	5.10	4.80	4.50

9-Week Varieties

Smith's Superlative. Golden yellow. M. Inc.....	7-14	10-25	3.25	6.15	5.85	5.50	5.20	4.85
Sunglow. Golden yellow. L. Inc.....	7-14	10-25	2.50	4.75	4.50	4.25	4.00	3.75
<i>p</i> Yellow Ambassador. Light lemon yellow. L. Inc....	7-14	10-25	3.00	5.70	5.40	5.10	4.80	4.50
Yellow Bergen. Med. Inc.....	7-14	10-25	3.25	6.15	5.85	5.50	5.20	4.85
Golden Glory. Golden yellow. M. Inc.....	7-14	11-1	3.25	6.15	5.85	5.50	5.20	4.85
<i>s</i> Good News. Deep lemon yellow. M. Inc.....	7-14	11-1	3.25	6.15	5.85	5.50	5.20	4.85

10-Week Varieties

<i>p</i> Dark Indianapolis Yellow. For pot plant use only....	7-19	11-5	3.50	6.65	6.30	5.95	5.60	5.25
<i>s</i> Indianapolis Yellow. Lemon yellow. M. Inc.....	7-20	11-5	3.00	5.70	5.40	5.10	4.80	4.50
Schweizerland. Deep golden. M. Inc.....	7-20	11-5	4.00	7.60	7.20	6.80	6.40	6.00
<i>s</i> Jamboree. Golden yellow. M. Inc.....	7-19	11-10	4.50	8.55	8.10	7.65	7.20	6.75
<i>p</i> Yellow Beauty. Golden yellow. S. Inc.....	7-19	11-10	3.25	6.15	5.85	5.50	5.20	4.85
Yellow Monument. Light lemon yellow. L. Inc....	7-22	11-10	3.00	5.70	5.40	5.10	4.80	4.50
Yellow Pockett. Exhibition variety. L. Inc.....	7-19	11-10	3.25	6.15	5.85	5.50	5.20	4.85
<i>s</i> Yellow Queen. Sport of Orchid Queen. L. Inc.....	7-19	11-10	3.25	6.15	5.85	5.50	5.20	4.85
Honey Dew. Lemon yellow. Int. Inc.....	7-22	11-12	3.25	6.15	5.85	5.50	5.20	4.85

11-Week Varieties

<i>p</i> Bonaffon DeLuxe. Golden yellow. S. Inc.....	7-25	11-20	2.50	4.75	4.50	4.25	4.00	3.75
<i>p</i> Friendly Rival. Deep chrome yellow. M. Inc.....	7-25	11-20	3.00	5.70	5.40	5.10	4.80	4.50
Purdue. Lemon yellow. M. Inc.....	7-25	11-20	4.00	7.60	7.20	6.80	6.40	6.00
<i>s</i> Yellow Mefo. Lemon yellow. L. Inc.....	7-25	11-20	3.00	5.70	5.40	5.10	4.80	4.50
Harvester. Deep canary yellow. M. Inc.....	7-24	11-23	3.00	5.70	5.40	5.10	4.80	4.50
Marie DePetris. Deep golden yellow. M. Inc.....	7-24	11-23	3.00	5.70	5.40	5.10	4.80	4.50

LARGE FLOWERING STANDARDS (Continued)

YELLOW (Continued)

Name and Description	Pinch	Matures	50 per 50	100-250 per 100	300-450 per 100	500-950 per 100	1000-2450 per 100	2500 up per 100
12-Week Varieties								
<i>s</i> Golden Pearson. Light golden yellow. M. Inc.....	7-28	11-25	\$2.75	\$5.20	\$4.95	\$4.65	\$4.40	\$4.10
<i>p</i> Sun Gold. Lemon yellow. M. Inc.....	7-28	11-25	3.00	5.70	5.40	5.10	4.80	4.50
Yellow Chattanooga. L. Inc.....	7-28	11-25	2.75	5.20	4.95	4.65	4.40	4.10
Golden Mrs. Ross. Golden yellow. L. Inc.....	7-30	12-3	2.75	5.20	4.95	4.65	4.40	4.10
Yellow Moeller. Sport of Margaret Moeller.....	7-31	12-3	3.50	6.65	6.30	5.95	5.60	5.25

13-Week Varieties

Chalice (New). Int. Inc.....	8-1	12-10	5.00	9.50	9.00	8.50	8.00	7.50
Golden Mistletoe. Light golden yellow. M. Inc.....	8-1	12-10	3.25	6.15	5.85	5.50	5.20	4.85
Dauntless. Golden yellow. Semi-Inc.....	8-4	12-15	3.50	6.65	6.30	5.95	5.60	5.25
Meteore. Lemon yellow. M. Inc.....	8-4	12-15	3.25	6.15	5.85	5.50	5.20	4.85
Tobin's Yellow. M. Inc.....	8-4	12-15	3.25	6.15	5.85	5.50	5.20	4.85

BRONZE and RED

8-Week Varieties

<i>p</i> Amber Bright. Amber bronze. L. Inc.....	7-15	10-8	\$4.00	\$7.60	\$7.20	\$6.80	\$6.40	\$6.00
--	------	------	--------	--------	--------	--------	--------	--------

9-Week Varieties

Hilda Bergen. Dark reddish bronze. M. Inc.....	7-14	10-25	3.25	6.15	5.85	5.50	5.20	4.85
Glitters. Deep reddish orange. M. Ref.....	7-16	10-28	3.25	6.15	5.85	5.50	5.20	4.85
<i>s</i> Apricot Queen. Orange-bronze. M. Inc.....	7-16	11-1	3.25	6.15	5.85	5.50	5.20	4.85
Ivanhoe. Reddish bronze. S. Inc.....	7-16	11-1	3.25	6.15	5.85	5.50	5.20	4.85
Mollie Nicholson. Salmon bronze. M. Inc.....	7-20	11-1	4.00	7.60	7.20	6.80	6.40	6.00
<i>s</i> Detroit News. Reddish bronze. M. Inc.....	7-16	11-1	3.25	6.15	5.85	5.50	5.20	4.85

10-Week Varieties

<i>ps</i> Indianapolis Bronze. Buff bronze. M. Inc.....	7-20	11-5	3.00	5.70	5.40	5.10	4.80	4.50
<i>p</i> Indianapolis Golden Bronze (New). Quilled. For pot plant use only.....	7-19	11-5	5.00	9.50	9.00	8.50	8.00	7.50
Anaconda. Deep coppery red. L. Inc.....	7-20	11-8	2.75	5.20	4.95	4.65	4.40	4.10
<i>s</i> Bronze Orchid Queen. Apricot buff. L. Inc.....	7-20	11-10	3.25	6.15	5.85	5.50	5.20	4.85
Mrs. Stahelin. Reddish bronze. M. Inc.....	7-20	11-10	3.50	6.65	6.30	5.95	5.60	5.25
Oakdale. Buff bronze. M. Inc.....	7-20	11-10	4.50	8.55	8.10	7.65	7.20	6.75
Garnet King. Dark red. M. Ref.....	7-24	11-13	3.25	6.15	5.85	5.50	5.20	4.85
<i>s</i> Mrs. Roy. Red. M. Inc.....	7-20	11-13	3.25	6.15	5.85	5.50	5.20	4.85

12-Week Varieties

<i>p</i> Bronze Frick. Light bronze. M. Inc.....	7-28	11-25	3.00	5.70	5.40	5.10	4.80	4.50
<i>s</i> Gladys Pearson. Light buff bronze. M. Inc.....	7-28	11-25	2.75	5.20	4.95	4.65	4.40	4.10
<i>s</i> Oak Leaf (Bronze Pearson). M. Inc.....	7-28	11-25	2.75	5.20	4.95	4.65	4.40	4.10
Muto's Crimson. Red. M. Semi-Inc.....	7-28	12-1	4.00	7.60	7.20	6.80	6.40	6.00

13-Week Varieties

Bronze Mistletoe. Buff bronze. M. Inc.....	7-28	12-5	3.25	6.15	5.85	5.50	5.20	4.85
--	------	------	------	------	------	------	------	------

PINK

8-Week Varieties

Pink Chief. Lavender. M. Inc.....	7-8	10-15	\$2.75	\$5.20	\$4.95	\$4.65	\$4.40	\$4.10
Major Bowes. Deep lavender. M. Inc.....	7-12	10-20	3.00	5.70	5.40	5.10	4.80	4.50

9-Week Varieties

Sugar Plum. Hard pink Mum. M. Inc.....	7-14	11-1	4.50	8.55	8.10	7.65	7.20	6.75
--	------	------	------	------	------	------	------	------

10-Week Varieties

<i>sp</i> Indianapolis Pink. Deep lavender. M. Inc.....	7-20	11-5	3.00	5.70	5.40	5.10	4.80	4.50
<i>s</i> Dark Orchid Queen. Deep pink. L. Inc.....	7-20	11-10	3.25	6.15	5.85	5.50	5.20	4.85
<i>s</i> Orchid Queen. Orchid pink. M. Inc.....	7-20	11-10	3.25	6.15	5.85	5.50	5.20	4.85
Pink Pockett. Lavender. L. Inc.....	7-19	11-10	3.25	6.15	5.85	5.50	5.20	4.85
<i>p</i> Queen of Pinks. Lavender. S. Inc.....	7-19	11-10	2.75	5.20	4.95	4.65	4.40	4.10

LARGE FLOWERING STANDARDS (Continued)

PINK (Continued)

Name and Description	Pinch	Matures	50 per 50	100-250 per 100	300-450 per 100	500-950 per 100	1000-2450 per 100	2500 up per 100
11-Week Varieties								
Aristocrat. Deep lavender. L. Inc.....	7-22	11-20	\$3.25	\$6.15	\$5.85	\$5.50	\$5.20	\$4.85
<i>p</i> Helen Frick. Rose pink. M. Inc.....	7-28	11-20	3.00	5.70	5.40	5.10	4.80	4.50
Edwin Seidewitz. Lavender. M. Inc.....	7-28	11-23	3.00	5.70	5.40	5.10	4.80	4.50
<i>p</i> Thanksgiving Pink. Deep pink. M. Ref.....	7-24	11-23	3.00	5.70	5.40	5.10	4.80	4.50
12-Week Varieties								
Rose Delight. Deep rose. M. Inc.....	7-28	11-25	4.00	7.60	7.20	6.80	6.40	6.00
13-Week Varieties								
Pink Mistletoe. Lavender. M. Inc.....	8-1	12-5	3.25	6.15	5.85	5.50	5.20	4.85

Spider Varieties

Name and Description	Pinch	Matures	50 per 50	100-250 per 100	300-450 per 100	500-950 per 100	1000-2450 per 100	2500 up per 100
9-Week Varieties								
Kay Tashima. White.....	7-15	10-25	\$3.50	\$6.65	\$6.30	\$5.95	\$5.60	\$5.25
Mary Garden. Pink.....	7-14	11-1	4.50	8.55	8.10	7.65	7.20	6.75
Mrs. R. A. Walker. Deep lavender.....	7-14	11-1	3.50	6.65	6.30	5.95	5.60	5.25
<i>p</i> Queen's Lace. White.....	7-14	11-1	4.00	7.60	7.20	6.80	6.40	6.00
Yellow Lace. Yellow sport of Queen's Lace.....	7-14	11-1	4.00	7.60	7.20	6.80	6.40	6.00
10-Week Varieties								
Gene Harwood. Buff bronze.....	7-19	11-5	3.50	6.65	6.30	5.95	5.60	5.25
Mamoru. Buff bronze.....	7-19	11-5	3.00	5.70	5.40	5.10	4.80	4.50
Nomago (New). Bronze.....	7-19	11-5	5.00	9.50	9.00	8.50	8.00	7.50
Rayonnante. Pink.....	7-19	11-5	3.25	6.15	5.85	5.50	5.20	4.85
Sue Sally Jones. Deep lemon yellow.....	7-19	11-5	3.50	6.65	6.30	5.95	5.60	5.25
Waikiki. Apricot bronze.....	7-19	11-5	3.50	6.65	6.30	5.95	5.60	5.25
White Rayonnante. White.....	7-19	11-5	3.25	6.15	5.85	5.50	5.20	4.85
<i>p</i> Peggy Ann Hoover. Pink.....	7-20	11-10	3.50	6.65	6.30	5.95	5.60	5.25
11-Week Varieties								
Lorraine. Yellow.....	7-24	11-15	4.00	7.60	7.20	6.80	6.40	6.00

Pompons, Singles and Anemones

Types are abbreviated as follows: Pom.—Pompon; Dec.—Decorative; Sgl.—Single; Anem.—Anemone. Size of flower is indicated by S—Small; M—Medium; L—Large.

s—Indicates varieties we find most suitable for shading; *d*—Indicates varieties suitable to grow as disbudded Pompons; *p*—Indicates varieties suitable for pot plants.

Pinching and flowering dates given here are for normal flowering without shading or lights.

Note carefully instructions for ordering on page 8. No orders for less than 50 rooted cuttings of a variety accepted. Minimum total order, 500 cuttings

WHITE

Name and Description	Pinch	Matures	50 per 50	100-250 per 100	300-450 per 100	500-950 per 100	1000-2450 per 100	2500 up per 100
7-Week Varieties								
Lyric (New). M. Pom.....		10-5	\$5.00	\$9.50	\$9.00	\$8.50	\$8.00	\$7.50
Horizon (New). Pure white. M. Pom.....		10-5	5.00	9.50	9.00	8.50	8.00	7.50
Classic. S. Semi-formal Pom.....	7-5	10-10	4.50	8.55	8.10	7.65	7.20	6.75
<i>p</i> Maestro. Med. Pom. Dwarf, compact, 18-in. growth... 7-4		10-10	4.50	8.55	8.10	7.65	7.20	6.75
Renown. White Daisy.....	7-4	10-10	4.50	8.55	8.10	7.65	7.20	6.75
Silverplate. M. Dec.....	7-8	10-12	4.50	8.55	8.10	7.65	7.20	6.75

POMPONS, SINGLES AND ANEMONES (Continued)

WHITE (Continued)

Name and Description	Pinch	Matures	50 per 50	100-250 per 100	300-450 per 100	500-950 per 100	1000-2450 per 100	2500 up per 100
8-Week Varieties								
<i>s</i> Irene. S. Pom.....	7-10	10-15	\$2.75	\$5.20	\$4.95	\$4.65	\$4.40	\$4.10
Norona (New). S. Pom.....	7-10	10-15	5.00	9.50	9.00	8.50	8.00	7.50
<i>sd</i> Silver Ball. L. Pom.....	7-10	10-15	2.50	4.75	4.50	4.25	4.00	3.75
<i>s</i> Minong. S. Pom.....	7-8	10-20	2.50	4.75	4.50	4.25	4.00	3.75
<i>s</i> Pristine. Pure white. M. Pom.....	7-8	10-20	4.00	7.60	7.20	6.80	6.40	6.00
Snow Cloud. White. M. Pom.....	7-10	10-20	3.00	5.70	5.40	5.10	4.80	4.50
9-Week Varieties								
<i>s</i> Cotton Top. Pure white.....	7-14	10-25	3.00	5.70	5.40	5.10	4.80	4.50
Cream Dot. Cream, apricot center. M. Pom.....	7-15	10-25	2.75	5.20	4.95	4.65	4.40	4.10
Keepsake (New). Cream white. M. Pom.....		10-25	5.00	9.50	9.00	8.50	8.00	7.50
<i>s</i> Pinocchio. S. Pom.....	7-15	10-25	2.75	5.20	4.95	4.65	4.40	4.10
<i>s</i> Popcorn. White. M. Pom.....	7-14	10-25	4.00	7.60	7.20	6.80	6.40	6.00
<i>s</i> Songster. M. Pom.....	7-14	10-25	4.50	8.55	8.10	7.65	7.20	6.75
White Popcorn (New). Cream white sport of Popcorn.	7-14	10-25	5.00	9.50	9.00	8.50	8.00	7.50
<i>s</i> Arcadia. M. Pom.....	7-14	10-28	2.75	5.20	4.95	4.65	4.40	4.10
California White Daisy. Sport.....	7-14	11-1	3.00	5.70	5.40	5.10	4.80	4.50
<i>s</i> Halo. Early white Daisy.....	7-14	11-1	4.50	8.55	8.10	7.65	7.20	6.75
<i>s</i> Sea Gull. Cream white. M. Pom.....	7-14	11-1	2.75	5.20	4.95	4.65	4.40	4.10
<i>sd</i> White Doty. Ivory white. L. Pom.....	7-14	11-1	2.75	5.20	4.95	4.65	4.40	4.10
10-Week Varieties								
<i>s</i> Encore. Pure white. M. Pom.....	7-19	11-5	4.00	7.60	7.20	6.80	6.40	6.00
<i>s</i> Kolowa. White, yellow center. M. Sgl.....	7-19	11-5	4.50	8.55	8.10	7.65	7.20	6.75
Madonna (New). M. Pom.....	7-19	11-5	5.00	9.50	9.00	8.50	8.00	7.50
<i>d</i> White Anemone. M. Anem.....	7-19	11-5	3.25	6.15	5.85	5.50	5.20	4.85
<i>s</i> White Mensa. Ivory white. M. Sgl.....	7-20	11-5	3.00	5.70	5.40	5.10	4.80	4.50
<i>s</i> Moonglow. White. M. Pom.....	7-20	11-8	4.00	7.60	7.20	6.80	6.40	6.00
<i>s</i> Rev. Bushnell. Cream white. M. Pom.....	7-20	11-8	3.25	6.15	5.85	5.50	5.20	4.85
Dynamo (New). M. Pom.....	7-20	11-10	5.00	9.50	9.00	8.50	8.00	7.50
<i>sp</i> Little America. M. Anem.....	7-20	11-10	2.50	4.75	4.50	4.25	4.00	3.75
<i>s</i> Shasta. M. Anem.....	7-22	11-10	2.75	5.20	4.95	4.65	4.40	4.10
Shasta Daisy. M. Sgl. Sport of Shasta.....	7-22	11-10	2.75	5.20	4.95	4.65	4.40	4.10
Vesper. M. Pom.....	7-20	11-10	2.75	5.20	4.95	4.65	4.40	4.10
Illini Snowdrift. White. Dec.....	7-22	11-12	4.00	7.60	7.20	6.80	6.40	6.00
Matchless. White. M. Pom.....	7-22	11-12	3.00	5.70	5.40	5.10	4.80	4.50
11-Week Varieties								
Eskimo (New). M. Sgl.....	7-22	11-15	5.00	9.50	9.00	8.50	8.00	7.50
Lakme. Green eye. S. Pom.....	7-8	11-15	3.50	6.65	6.30	5.95	5.60	5.25
Sculpture (New). Ivory white. L. Sgl.....	7-22	11-15	5.00	9.50	9.00	8.50	8.00	7.50
<i>s</i> Snowflurry. S. Pom.....	7-22	11-15	4.50	8.55	8.10	7.65	7.20	6.75
<i>sd</i> White Freida. Yellow Cushion. L. Anem.....	7-22	11-15	3.00	5.70	5.40	5.10	4.80	4.50
<i>d</i> White Norma. White suffused with pink. L. Anem...	7-22	11-15	3.25	6.15	5.85	5.50	5.20	4.85
Highbrow. Ivory white. Dec.....	7-24	11-20	4.50	8.55	8.10	7.65	7.20	6.75
<i>sd</i> Long Island Beauty. White, yellow cushion. L. Anem.	7-24	11-20	2.50	4.75	4.50	4.25	4.00	3.75
<i>d</i> Nevada. White, green cushion. M. Anem.....	7-24	11-20	3.00	5.70	5.40	5.10	4.80	4.50
Priscilla. M. Pom.....	7-24	11-20	3.00	5.70	5.40	5.10	4.80	4.50
Seafoam. M. Pom.....	7-24	11-20	2.75	5.20	4.95	4.65	4.40	4.10
Crystal Beauty. Pure white. Pom.....	7-28	11-23	4.00	7.60	7.20	6.80	6.40	6.00
Illini Bountiful. White. Dec.....	7-28	11-23	4.00	7.60	7.20	6.80	6.40	6.00
<i>s</i> Paramount. M. Pom.....	7-28	11-23	4.50	8.55	8.10	7.65	7.20	6.75
12-Week Varieties								
White Usona. M. Pom.....	7-28	11-25	3.50	6.65	6.30	5.95	5.60	5.25
White Yuletide. Short. M. Pom.....	7-28	11-25	2.75	5.20	4.95	4.65	4.40	4.10
<i>d</i> White Valencia. Sport of Valencia.....	7-28	11-28	4.00	7.60	7.20	6.80	6.40	6.00
Belray. L. Pom.....	7-28	11-30	4.50	8.55	8.10	7.65	7.20	6.75
Cordova. Cream white. M. Dec.....	7-28	11-30	2.75	5.20	4.95	4.65	4.40	4.10
<i>s</i> Fortune. White. Pom.....	8-2	12-1	4.50	8.55	8.10	7.65	7.20	6.75
Monarch (New). Ivory white. L. Dec.....	8-2	12-1	5.00	9.50	9.00	8.50	8.00	7.50

POMPONS, SINGLES AND ANEMONES (Continued)

WHITE (Continued)

Name and Description	Pinch	Matures	13-Week Varieties					
			50 per 50	100-250 per 100	300-450 per 100	500-950 per 100	1000-2450 per 100	2500 up per 100
Acclaim (New). Large formal Pom.....	7-31	12-5	\$5.00	\$9.50	\$9.00	\$8.50	\$8.00	\$7.50
Cameo . Ivory white. Med. Pom.....	8-1	12-5	3.00	5.70	5.40	5.10	4.80	4.50
Cotillion (New). M. Semi-formal Pom.....	8-1	12-5	5.00	9.50	9.00	8.50	8.00	7.50
Ivory Cameo . Cream sport of Cameo.....	8-1	12-5	3.50	6.65	6.30	5.95	5.60	5.25
Spangles . S. Pom.....	8-1	12-5	4.50	8.55	8.10	7.65	7.20	6.75
Swan . L. Anem.....	8-1	12-5	3.50	6.65	6.30	5.95	5.60	5.25
Snowdrop (New). S. Pom.....	8-1	12-8	5.00	9.50	9.00	8.50	8.00	7.50
Illini Starburst . Creamy white, quilled type.....	8-1	12-10	4.50	8.55	8.10	7.65	7.20	6.75
Snow Queen (New). M. Formal Pom.....	8-1	12-10	5.00	9.50	9.00	8.50	8.00	7.50
<i>s</i> White Supreme . L. Anem.....	8-2	12-10	3.25	6.15	5.85	5.50	5.20	4.85
Yukon . M. Sgl.....	8-1	12-10	2.75	5.20	4.95	4.65	4.40	4.10

14-Week Varieties

Snowcrest . White. M. Dec.....	8-1	12-12	4.00	7.60	7.20	6.80	6.40	6.00
Garza . M. Anem.....	8-4	12-15	3.00	5.70	5.40	5.10	4.80	4.50
Satellite (New). Ivory white. M. Formal Pom.....	8-4	12-15	5.00	9.50	9.00	8.50	8.00	7.50
Silversmith . Pure white. Dec.....	8-4	12-15	4.00	7.60	7.20	6.80	6.40	6.00
Snowcap . White. M. Pom.....	8-4	12-15	4.00	7.60	7.20	6.80	6.40	6.00
Heirloom . Dec. Pom.....	8-7	12-20	4.50	8.55	8.10	7.65	7.20	6.75
Revelation . M. Pom.....	8-7	12-25	2.50	4.75	4.50	4.25	4.00	3.75
Snow . Ivory white. M. Pom.....	8-7	12-25	2.75	5.20	4.95	4.65	4.40	4.10

YELLOW

7-Week Varieties

Garland (New). Int. Sgl.....	10-5		\$5.00	\$9.50	\$9.00	\$8.50	\$8.00	\$7.50
Bright Forecast . Small formal Pompon.....	7-5	10-10	4.50	8.55	8.10	7.65	7.20	6.75
Goldrush . Small Sgl.....	7-5	10-10	4.50	8.55	8.10	7.65	7.20	6.75
Treasure (New). S. Pom.....	7-5	10-10	5.00	9.50	9.00	8.50	8.00	7.50
Lemonade . Ivory yellow. Int. Dec.....	7-8	10-12	4.50	8.55	8.10	7.65	7.20	6.75
Sweepstake . S. Pom.....	7-8	10-12	4.50	8.55	8.10	7.65	7.20	6.75

8-Week Varieties

<i>s</i> Yellow Irene . Light lemon yellow. S. Pom.....	7-8	10-15	2.75	5.20	4.95	4.65	4.40	4.10
<i>s</i> Rodell Improved . Lemon yellow. M. Pom.....	7-8	10-20	2.50	4.75	4.50	4.25	4.00	3.75

9-Week Varieties

<i>s</i> Gold Coast . Lemon yellow. M. Pom.....	7-14	10-25	2.50	4.75	4.50	4.25	4.00	3.75
<i>s</i> Golden Herald . Golden yellow. L. Dec.....	7-14	10-25	3.00	5.70	5.40	5.10	4.80	4.50
Sunup (New). S. Pom.....	7-14	10-25	5.00	9.50	9.00	8.50	8.00	7.50
<i>s</i> Yellow Dot . Bronze center. M. Pom.....	7-14	10-25	2.75	5.20	4.95	4.65	4.40	4.10
<i>s</i> Yellow Firebird . Bright lemon. M. Dec.....	7-14	10-25	3.25	6.15	5.85	5.50	5.20	4.85
Yellow Arcadia . Pernet yellow. M. Pom.....	7-14	10-28	2.75	5.20	4.95	4.65	4.40	4.10
<i>s</i> Mary L. Hall . Lemon yellow. M. Pom.....	7-14	11-1	2.50	4.75	4.50	4.25	4.00	3.75
<i>s</i> Schneeburg's Daisy . Golden yellow sport of Yellow Daisy. M. Sgl.....	7-15	11-1	4.00	7.60	7.20	6.80	6.40	6.00
<i>s</i> Starbright . Golden yellow. L. Sgl.....	7-14	11-1	4.00	7.60	7.20	6.80	6.40	6.00
Yellow Cassandra . Sport.....	7-20	11-1	4.00	7.60	7.20	6.80	6.40	6.00
<i>s</i> Yellow Daisy . Golden yellow. M. Sgl.....	7-14	11-1	3.00	5.70	5.40	5.10	4.80	4.50
<i>d</i> Yellow Doty . Buff yellow. M. L. Pom.....	7-14	11-1	2.75	5.20	4.95	4.65	4.40	4.10
Yellow Sea Gull . Light lemon yellow. Tall. M. Pom.....	7-14	11-1	2.75	5.20	4.95	4.65	4.40	4.10
Sunray . Light lemon yellow. M. Anem.....	7-14	11-3	2.50	4.75	4.50	4.25	4.00	3.75

10-Week Varieties

Brigadoon (New). M. Sgl.....	7-20	11-5	5.00	9.50	9.00	8.50	8.00	7.50
Barcarole . Golden yellow. M. Pom.....	7-20	11-5	2.75	5.20	4.95	4.65	4.40	4.10
Constellation . Yellow. M. Dec.....	7-20	11-5	3.00	5.70	5.40	5.10	4.80	4.50
<i>s</i> Crescendo . Tall yellow. L. Pom.....	7-20	11-5	4.50	8.55	8.10	7.65	7.20	6.75
<i>s</i> Golden Mensa . Sport of Mensa.....	7-20	11-5	3.00	5.70	5.40	5.10	4.80	4.50
<i>s</i> Nuggets . Light lemon yellow. S. Pom.....	7-20	11-5	2.50	4.75	4.50	4.25	4.00	3.75
Pixie . Deep golden yellow. S. Pom.....	7-20	11-10	3.25	6.15	5.85	5.50	5.20	4.85
Mason's Yellow . L. Sgl.....	7-20	11-10	3.25	6.15	5.85	5.50	5.20	4.85
<i>s</i> Yellow Shasta . Sport of Shasta.....	7-20	11-10	2.75	5.20	4.95	4.65	4.40	4.10
Illini Goldcup . Buttercup yellow. L. Pom.....	7-20	11-10	4.50	8.55	8.10	7.65	7.20	6.75
Illini Rye (New). Straw-colored. M. Pom.....	7-19	11-12	5.00	9.50	9.00	8.50	8.00	7.50

POMPONS, SINGLES AND ANEMONES (Continued)

YELLOW (Continued)

Name and Description	Pinch	Matures	50	100-250	300-450	500-950	1000-2450	2500 up
			per 50	per 100	per 100	per 100	per 100	per 100
11-Week Varieties								
sForty-Niner. Round, yellow Pom.....	7-24	11-15	\$4.00	\$7.60	\$7.20	\$6.80	\$6.40	\$6.00
sGolden Chord. Golden yellow. M. Pom.....	7-24	11-15	4.00	7.60	7.20	6.80	6.40	6.00
Princeton. Orange-yellow. M. Dec.....	7-24	11-15	3.25	6.15	5.85	5.50	5.20	4.85
Tally-Ho. M. Formal Pom.....	7-24	11-15	3.50	6.65	6.30	5.95	5.60	5.25
Thorobred (New). L. Sgl.....	7-24	11-15	5.00	9.50	9.00	8.50	8.00	7.50
Yellow Fellow. Deep lemon yellow. M. Dec.....	7-24	11-15	2.75	5.20	4.95	4.65	4.40	4.10
Illini Brave. Lemon yellow. Button Pom.....	7-22	11-16	4.00	7.60	7.20	6.80	6.40	6.00
dSusanne Miller. Buff yellow. L. Anem.....	7-22	11-18	3.25	6.15	5.85	5.50	5.20	4.85
Illini Honey. Deep golden. S. Pom.....	7-28	11-18	4.00	7.60	7.20	6.80	6.40	6.00
Mary Gold. Lemon yellow. M. Pom.....	7-28	11-18	2.50	4.75	4.50	4.25	4.00	3.75
Bojangles. Yellow Daisy.....	7-24	11-20	4.50	8.55	8.10	7.65	7.20	6.75
sKlondike. Orange yellow. M. Pom.....	7-24	11-20	4.50	8.55	8.10	7.65	7.20	6.75
sLollipop. Lemon yellow. Pom.....	7-24	11-20	4.50	8.55	8.10	7.65	7.20	6.75
Pippin (New). M. Pom.....	7-24	11-20	5.00	9.50	9.00	8.50	8.00	7.50
sdpYellow Long Island Beauty.....	7-24	11-20	4.00	7.60	7.20	6.80	6.40	6.00
dYellow Nevada. Med. Anem.....	7-24	11-20	3.00	5.70	5.40	5.10	4.80	4.50

12-Week Varieties

Champagne. Yellow. M. Sgl.....	7-28	11-25	4.00	7.60	7.20	6.80	6.40	6.00
Goldenrod (New). M. Pom.....	7-28	11-25	5.00	9.50	9.00	8.50	8.00	7.50
Goldsmith. Golden yellow. L. Dec.....	7-28	11-25	3.25	6.15	5.85	5.50	5.20	4.85
Highlander (New). M. Formal Dec.....	7-28	11-25	5.00	9.50	9.00	8.50	8.00	7.50
Illini Gold. Deep golden yellow. M. Pom.....	7-28	11-25	3.25	6.15	5.85	5.50	5.20	4.85
Sunnyside. Golden yellow. M. Pom.....	7-28	11-25	2.75	5.20	4.95	4.65	4.40	4.10
Yellow Priscilla (New). Lemon. M. Pom.....	7-28	11-25	5.00	9.50	9.00	8.50	8.00	7.50
Yellow Rolinda. Light buff yellow. M. Anem.....	7-28	11-25	3.00	5.70	5.40	5.10	4.80	4.50
Yellow Usona (New). Rich yellow sport of White Usona.	7-28	11-25	3.50	6.65	6.30	5.95	5.60	5.25
Golden Jane. Golden yellow. L. Sgl.....	8-1	11-28	3.00	5.70	5.40	5.10	4.80	4.50
Yellow Valencia. Sport of Valencia.....	7-28	11-28	3.00	5.70	5.40	5.10	4.80	4.50
Yellow Cordova. Lemon yellow. M. Dec.....	7-28	11-30	2.75	5.20	4.95	4.65	4.40	4.10
sNosegay. Yellow. S. Pom.....	7-28	12-1	5.00	9.50	9.00	8.50	8.00	7.50
Omega. Lemon yellow. M. Pom.....	7-28	12-1	3.00	5.70	5.40	5.10	4.80	4.50

13-Week Varieties

Golden Harvest. Deep gold. S. Pom.....	8-1	12-5	4.00	7.60	7.20	6.80	6.40	6.00
Brandywine. Orange yellow. M. Dec.....	8-1	12-5	5.00	9.50	9.00	8.50	8.00	7.50
Cinderella. Yellow. M. Sgl.....	8-1	12-5	4.00	7.60	7.20	6.80	6.40	6.00
sGoldtone. Yellow. M. Sgl.....	8-1	12-5	4.50	8.55	8.10	7.65	7.20	6.75
Jack-Pot (New). Golden yellow. L. Dec.....	8-1	12-5	5.00	9.50	9.00	8.50	8.00	7.50
Symmetry. M. Pom.....	8-1	12-5	5.00	9.50	9.00	8.50	8.00	7.50
Yellow Cameo. Deep lemon yellow. M. Pom.....	8-1	12-5	3.00	5.70	5.40	5.10	4.80	4.50
Yellow Swan. Sport of Swan.....	8-1	12-5	3.50	6.65	6.30	5.95	5.60	5.25
dYellow Supreme. Buff yellow. L. Anem.....	8-2	12-10	3.25	6.15	5.85	5.50	5.20	4.85
Challenge. Yellow. M. Sgl.....	8-2	12-12	4.50	8.55	8.10	7.65	7.20	6.75
sCorsair. L. Pom.....	8-2	12-12	5.00	9.50	9.00	8.50	8.00	7.50

14-Week Varieties

Yellow Riviera. Sport of Riviera.....	8-4	12-15	4.00	7.60	7.20	6.80	6.40	6.00
Yellow Snowcrest (New). Sport of Snowcrest.....	8-4	12-15	5.00	9.50	9.00	8.50	8.00	7.50
December Gold. Deep golden yellow. M. Dec.....	8-4	12-15	3.00	5.70	5.40	5.10	4.80	4.50
Sequin. S. Pom.....	8-4	12-15	4.50	8.55	8.10	7.65	7.20	6.75
Shamrock. L. Dec.....	8-4	12-15	4.50	8.55	8.10	7.65	7.20	6.75
Revelry (New). M. Dec.....	8-7	12-20	5.00	9.50	9.00	8.50	8.00	7.50
Sunrise. Yellow. M. Pom.....	8-7	12-20	5.00	9.50	9.00	8.50	8.00	7.50
Vibrant. Deep lemon yellow. M. Dec.....	8-4	12-20	3.00	5.70	5.40	5.10	4.80	4.50
Golden Anniversary. Yellow. Pom.....	8-7	12-25	3.50	6.65	6.30	5.95	5.60	5.25
Siren. Yellow. Dec.....	8-7	12-25	4.50	8.55	8.10	7.65	7.20	6.75
Yellow Revelation. Sport.....	8-7	12-25	3.50	6.65	6.30	5.95	5.60	5.25
Yellow Snow. Deep lemon yellow. M. Pom.....	8-7	12-25	2.75	5.20	4.95	4.65	4.40	4.10
Yuleflame. Yellow. Dec.....	8-7	12-25	3.50	6.65	6.30	5.95	5.60	5.25

BRONZE and RED

7-Week Varieties

Marionette. Rust red. Pom.....	10-1		\$4.50	\$8.55	\$8.10	\$7.65	\$7.20	\$6.75
Firecracker (New). Mahogany bronze. M. Dec.....	7-1	10-5	5.00	9.50	9.00	8.50	8.00	7.50

POMPONS, SINGLES AND ANEMONES (Continued)

BRONZE and RED (Continued)—7-Week Varieties

Name and Description	Pinch	Matures	50 per 50	100-250 per 100	300-450 per 100	500-950 per 100	1000-2450 per 100	2500 up per 100
Bamboo. Buff bronze. Daisy.....	7-4	10-10	\$4.50	\$8.55	\$8.10	\$7.65	\$7.20	\$6.75
Blueblood (New). Deep amaranth. M. Dec.....	7-4	10-10	5.00	9.50	9.00	8.50	8.00	7.50
Calico. Coral bronze. Daisy.....	7-4	10-10	4.50	8.55	8.10	7.65	7.20	6.75
Caravan (New). Salmon bronze. M. Dec.....	7-4	10-10	5.00	9.50	9.00	8.50	8.00	7.50
Fireside. Burnt orange and salmon. Dec.....	7-4	10-10	4.50	8.55	8.10	7.65	7.20	6.75
Admiral (New). Crimson. M. Dec.....	7-5	10-12	5.00	9.50	9.00	8.50	8.00	7.50
Fashion. Salmon and rosewood. M. Dec.....	7-4	10-12	4.50	8.55	8.10	7.65	7.20	6.75
Nocturne. Crimson. S. Pom.....	7-5	10-12	4.50	8.55	8.10	7.65	7.20	6.75
Nokomis. Bronze. M. Dec.....	7-5	10-12	4.50	8.55	8.10	7.65	7.20	6.75
Witchery. Golden bronze. M. Dec.....	7-5	10-12	4.50	8.55	8.10	7.65	7.20	6.75

8-Week Varieties

Cocktail (New). Salmon orange. M. Pom.....	7-8	10-15	5.00	9.50	9.00	8.50	8.00	7.50
Detroit. Reddish bronze. S. Pom.....	7-8	10-15	4.00	7.60	7.20	6.80	6.40	6.00
Rajah (New). Scarlet red. M. Sgl.....	7-8	10-15	5.00	9.50	9.00	8.50	8.00	7.50
Robinhue. Red. M. Dec.....	7-8	10-15	4.50	8.55	8.10	7.65	7.20	6.75
James Stewart. Apricot gold. S. Pom.....	7-8	10-15	4.50	8.55	8.10	7.65	7.20	6.75
<i>s</i> Adelaide. Dark reddish bronze. S. Pom.....	7-15	10-20	2.75	5.20	4.95	4.65	4.40	4.10
<i>s</i> Jemima. Dark reddish bronze. M. Pom.....	7-15	10-20	2.75	5.20	4.95	4.65	4.40	4.10

9-Week Varieties

Bonton. Bronze. M. Pom.....	7-15	10-25	3.25	6.15	5.85	5.50	5.20	4.85
<i>s</i> Bronze Dot. Sport of Pink Dot.....	7-12	10-25	2.75	5.20	4.95	4.65	4.40	4.10
<i>s</i> Buckskin. Tawny bronze. Daisy.....	7-12	10-25	4.50	8.55	8.10	7.65	7.20	6.75
<i>s</i> Firebird. Dark reddish bronze. M. Dec.....	7-14	10-25	2.75	5.20	4.95	4.65	4.40	4.10
Red Dot. Yellow bronze, red center. M. Pom.....	7-15	10-25	3.50	6.65	6.30	5.95	5.60	5.25
<i>s</i> Firefly. Orange red. M. Pom.....	7-14	11-1	4.50	8.55	8.10	7.65	7.20	6.75
October Bronze. Light bronze. M. Sgl.....	7-16	10-28	3.25	6.15	5.85	5.50	5.20	4.85
Bronze Daisy	7-14	11-1	3.00	5.70	5.40	5.10	4.80	4.50
Buccaneer (New). Orange apricot. M. Sgl.....	7-14	11-1	5.00	9.50	9.00	8.50	8.00	7.50
<i>s</i> Red Seneca. Orange bronze. M. Dec.....	7-14	11-1	4.00	7.60	7.20	6.80	6.40	6.00
Navaho. Deep crimson. M. Pom.....	7-14	11-1	3.00	5.70	5.40	5.10	4.80	4.50
<i>s</i> Seneca. Orange bronze. M. Dec.....	7-14	11-1	3.25	6.15	5.85	5.50	5.20	4.85
Red Daisy. Deep red. M. Sgl.....	7-14	11-1	3.25	6.15	5.85	5.50	5.20	4.85
Bronze Buckingham. Light orange bronze. M. Sgl.....	7-15	11-3	2.75	5.20	4.95	4.65	4.40	4.10

10-Week Varieties

<i>s</i> Beauregard. Reddish orange. M. Pom.....	7-19	11-5	4.50	8.55	8.10	7.65	7.20	6.75
Bittersweet. Bittersweet red. M. Sgl.....	7-14	11-5	3.00	5.70	5.40	5.10	4.80	4.50
<i>s</i> Butterscotch. Golden bronze. M. Pom.....	7-20	11-5	4.00	7.60	7.20	6.80	6.40	6.00
Cassandra. Orange bronze. M. Pom.....	7-14	11-5	3.00	5.70	5.40	5.10	4.80	4.50
<i>s</i> Magician. Bronze. L. Pom.....	7-14	11-5	4.50	8.55	8.10	7.65	7.20	6.75
<i>s</i> Red Rust. Reddish bronze. M. Pom.....	7-14	11-5	3.00	5.70	5.40	5.10	4.80	4.50
<i>s</i> Rubicon. Bronze red. M. Dec.....	7-14	11-5	4.00	7.60	7.20	6.80	6.40	6.00
<i>p</i> Gypsy. Light reddish bronze. S. Anem.....	7-15	11-8	2.75	5.20	4.95	4.65	4.40	4.10
Bronze Linda Lou. Sport of Linda Lou.....	7-19	11-10	4.00	7.60	7.20	6.80	6.40	6.00
Bronze Thyra. Sport of Thyra. L. Pom.....	7-19	11-10	4.00	7.60	7.20	6.80	6.40	6.00
<i>d</i> Bronze Tuxedo. Buff. Med. L. Anem.....	7-19	11-10	3.25	6.15	5.85	5.50	5.20	4.85
<i>s</i> Chanticleer. Reddish bronze. L. Pom.....	7-19	11-10	4.50	8.55	8.10	7.65	7.20	6.75
<i>s</i> Chevron. Orange red. M. Dec.....	7-19	11-10	4.50	8.55	8.10	7.65	7.20	6.75
<i>s</i> Copperhead. Coppery bronze. L. Dec.....	7-20	11-10	4.50	8.55	8.10	7.65	7.20	6.75
Europa. Cardinal red. L. Sgl.....	7-19	11-10	4.00	7.60	7.20	6.80	6.40	6.00
Illini Burma (New). Light bronze. L. Pom.....	7-19	11-10	5.00	9.50	9.00	8.50	8.00	7.50
Mason's Bronze. Burnt orange. L. Sgl.....	7-19	11-10	3.25	6.15	5.85	5.50	5.20	4.85
Mason's Red. Scarlet. L. Sgl.....	7-19	11-10	3.25	6.15	5.85	5.50	5.20	4.85
<i>s</i> Samovar. Reddish bronze. M. Pom.....	7-19	11-10	4.00	7.60	7.20	6.80	6.40	6.00
Sylvanna. Orange bronze. M. Sgl.....	7-19	11-10	3.00	5.70	5.40	5.10	4.80	4.50
<i>d</i> The Titan. Scarlet crimson. L. Anem.....	7-19	11-10	3.25	6.15	5.85	5.50	5.20	4.85
<i>s</i> Gold Braid. Yellow, bronze-red center. M. Pom.....	7-19	11-12	5.00	9.50	9.00	8.50	8.00	7.50
<i>s</i> Bronze Masterpiece. Rosewood bronze. M. Pom.....	7-19	11-12	2.75	5.20	4.95	4.65	4.40	4.10
<i>s</i> Dark Bronze Masterpiece. Sport. M. Pom.....	7-19	11-12	4.00	7.60	7.20	6.80	6.40	6.00
<i>s</i> Paragon. Red. L. Pom.....	7-19	11-12	4.50	8.55	8.10	7.65	7.20	6.75

11-Week Varieties

Bronze Princeton. Bronze sport of Princeton.....	7-22	11-15	3.25	6.15	5.85	5.50	5.20	4.85
<i>s</i> Mrs. Dewey. Deep bronze. L. Sgl.....	7-25	11-15	4.50	8.55	8.10	7.65	7.20	6.75

POMPONS, SINGLES AND ANEMONES (Continued)

BRONZE and RED (Continued)—11-Week Varieties

Name and Description	Pinch	Matures	50 per 50	100-250 per 100	300-450 per 100	500-950 per 100	1000-2450 per 100	2500 up per 100
Red Princeton. Brazil red. M. Dec.....	7-24	11-15	\$3.25	\$6.15	\$5.85	\$5.50	\$5.20	\$4.85
Shalimar (New). Orange bronze. M. Anem.....	7-24	11-15	5.00	9.50	9.00	8.50	8.00	7.50
Illini Redhead. Deep red. S. Pom.....	7-23	11-17	4.00	7.60	7.20	6.80	6.40	6.00
Bourbon. Rust bronze. M. Sgl.....	7-25	11-20	4.00	7.60	7.20	6.80	6.40	6.00
Illini Warrior. Bronzy orange. Button Pom.....	7-25	11-20	4.00	7.60	7.20	6.80	6.40	6.00
Legal Tender. Bronze and gold. M. Dec.....	7-24	11-20	2.50	4.75	4.50	4.25	4.00	3.75
Rusticon. Rust red. M. Pom.....	7-25	11-20	3.00	5.70	5.40	5.10	4.80	4.50
<i>s</i> Thelma. Orange scarlet. M. Pom.....	7-25	11-20	5.00	9.50	9.00	8.50	8.00	7.50
Carousel. Coral bronze. M. Sgl.....	7-25	11-22	4.50	8.55	8.10	7.65	7.20	6.75
<i>d</i> Red Rolinda. Red. M. Anem.....	7-24	11-23	3.00	5.70	5.40	5.10	4.80	4.50
Bronze Minuet. Bronze Pom.....	7-28	11-25	3.50	6.65	6.30	5.95	5.60	5.25
Festival. Apricot red. S. Sgl.....	7-28	11-25	4.00	7.60	7.20	6.80	6.40	6.00

12-Week Varieties

Bronze Goldsmith. Mars orange. M. Dec.....	7-28	11-25	3.25	6.15	5.85	5.50	5.20	4.85
Falcon. Reddish bronze. M. Pom.....	7-28	11-25	4.50	8.55	8.10	7.65	7.20	6.75
Yolanda. Orange bronze. S. Anem.....	7-28	11-25	2.50	4.75	4.50	4.25	4.00	3.75
<i>d</i> Apricot Valencia. L. Sgl.....	7-28	11-28	3.00	5.70	5.40	5.10	4.80	4.50
<i>d</i> Crimson Valencia. Sport of Valencia. L. Sgl.....	7-28	11-28	4.00	7.60	7.20	6.80	6.40	6.00
<i>s</i> Indian Head. Reddish apricot. M. Sgl.....	7-28	11-28	4.50	8.55	8.10	7.65	7.20	6.75
Amberina (New). Orange bronze. M. Dec.....	7-28	12-1	5.00	9.50	9.00	8.50	8.00	7.50
Galaxy. Orange scarlet. M. Sgl.....	7-28	12-1	4.00	7.60	7.20	6.80	6.40	6.00

13-Week Varieties

Dazzler. Coppery bronze. L. Sgl. Anem. center.....	7-28	12-5	5.00	9.50	9.00	8.50	8.00	7.50
Debonair. Crimson red. L. Pom.....	7-28	12-5	3.00	5.70	5.40	5.10	4.80	4.50
Mahogany Viking. Mahogany bronze. M. Sgl.....	7-28	12-5	3.50	6.65	6.30	5.95	5.60	5.25
<i>d</i> Bronze Supreme. Bronze sport of Supreme. L. Anem.....	8-1	12-10	3.25	6.15	5.85	5.50	5.20	4.85
Cavalcade. Mandarin red. M. Pom.....	8-5	12-10	3.50	6.65	6.30	5.95	5.60	5.25
Harlequin (New). Crimson red. M. Dec.....	8-4	12-10	5.00	9.50	9.00	8.50	8.00	7.50
Holiday. Wide-petaled crimson red. M. Sgl.....	8-4	12-10	4.00	7.60	7.20	6.80	6.40	6.00
Pageantry. Red. M. Pom.....	8-5	12-10	4.50	8.55	8.10	7.65	7.20	6.75
<i>d</i> Red Supreme. Sport of Dark Pink Supreme. L. Anem.....	8-5	12-10	4.00	7.60	7.20	6.80	6.40	6.00
Bronze Minstrel. Sport of Minstrel. Pom.....	8-1	12-13	4.00	7.60	7.20	6.80	6.40	6.00
Christmas Star. Scarlet red. M. Sgl.....	8-4	12-12	3.50	6.65	6.30	5.95	5.60	5.25

14-Week Varieties

Bronze Riviera. Sport of Riviera.....	8-1	12-15	4.00	7.60	7.20	6.80	6.40	6.00
Christmas Greeting. Crimson-scarlet. M. Dec.....	8-4	12-15	4.50	8.55	8.10	7.65	7.20	6.75
<i>p</i> Claret. Brilliant red. M. Sgl.....	8-4	12-15	5.00	9.50	9.00	8.50	8.00	7.50
Sarong. Crimson. M. Sgl.....	8-4	12-15	3.25	6.15	5.85	5.50	5.20	4.85
Topaz (New). Orange bronze. M. Sgl.....	8-4	12-15	5.00	9.50	9.00	8.50	8.00	7.50
Merrymaker. Scarlet. M. Sgl.....	8-7	12-20	4.00	7.60	7.20	6.80	6.40	6.00
Poinsettia (New). Scarlet red. L. Sgl.....	8-7	12-20	5.00	9.50	9.00	8.50	8.00	7.50

PINK

7-Week Varieties

Argonne. Amaranth. Pom.....	7-4	10-10	4.00	7.60	7.20	6.80	6.40	6.00
Courtier (New). Lavender pink. Dec.....	7-4	10-10	5.00	9.50	9.00	8.50	8.00	7.50
Dream Girl. M. Pom.....	7-4	10-10	4.00	7.60	7.20	6.80	6.40	6.00
Joybringer. Salmon rose. M. Pom.....	7-4	10-10	4.50	8.55	8.10	7.65	7.20	6.75
Lassie (New). Dark pink. M. Dec.....	7-4	10-10	5.00	9.50	9.00	8.50	8.00	7.50
Serenade. Magenta pink. M. Sgl.....	7-4	10-10	4.50	8.55	8.10	7.65	7.20	6.75
Sweetheart. Lavender pink. M. Sgl.....	7-4	10-10	4.50	8.55	8.10	7.65	7.20	6.75
Adagio. Coppery rose Pom. Tall.....	7-4	10-12	4.50	8.55	8.10	7.65	7.20	6.75
Masquerade. S. Pom.....	7-8	10-12	3.50	6.65	6.30	5.95	5.60	5.25
Salute. Deep pink. S. Sgl.....	7-8	10-12	4.50	8.55	8.10	7.65	7.20	6.75

8-Week Varieties

Dark Jewel. Deep lavender. S. Pom.....	7-10	10-15	3.00	5.70	5.40	5.10	4.80	4.50
Jewel. Lavender. S. Pom.....	7-10	10-15	3.00	5.70	5.40	5.10	4.80	4.50
<i>s</i> Carolyn Yosick. Lavender. S. Dec.....	7-8	10-20	3.00	5.70	5.40	5.10	4.80	4.50
Ecstasy. Lavender. M. Pom.....	7-20	10-20	2.75	5.20	4.95	4.65	4.40	4.10
Capt. Cook. Deep rose pink. M. Pom.....	7-15	10-23	2.75	5.20	4.95	4.65	4.40	4.10
Pink Sprite. Light orchid. S. Pom.....	7-14	10-23	4.00	7.60	7.20	6.80	6.40	6.00
<i>s</i> Mary McArthur. Pink, shaded bronze. S. Pom.....	7-14	10-23	3.50	6.65	6.30	5.95	5.60	5.25

POMPONS, SINGLES AND ANEMONES (Continued)

PINK (Continued)

Name and Description	Pinch	Matures	50 per 50	100-250 per 100	300-450 per 100	500-950 per 100	1000-2450 per 100	2500 up per 100
9-Week Varieties								
Betty Rose. Lavender. L. Anem.....	7-14	10-25	\$3.25	\$6.15	\$5.85	\$5.50	\$5.20	\$4.85
Dark Pink Dot. Deep pink sport.....	7-14	10-25	2.75	5.20	4.95	4.65	4.40	4.10
Edith Roberts. Light orchid pink. S. Pom.....	7-14	10-25	3.50	6.65	6.30	5.95	5.60	5.25
<i>s</i> Jessie. Light lavender. M. Pom.....	7-14	10-25	2.75	5.20	4.95	4.65	4.40	4.10
October Pink. Light lavender. M. Sgl.....	7-14	10-25	3.25	6.15	5.85	5.50	5.20	4.85
<i>s</i> Pink Dot. Light pink. M. Pom.....	7-14	10-25	2.75	5.20	4.95	4.65	4.40	4.10
Reward. Deep pink. M. Sgl.....	7-14	10-25	4.50	8.55	8.10	7.65	7.20	6.75
Ballerina. Pink. M. Sgl.....	7-16	11-1	4.00	7.60	7.20	6.80	6.40	6.00
<i>d</i> Lillian Doty. Light rose pink. L. Pom.....	7-16	11-1	2.75	5.20	4.95	4.65	4.40	4.10
Pink California Daisy. M. Sgl.....	7-16	11-1	3.50	6.65	6.30	5.95	5.60	5.25
W. H. Buckingham. Rose. M. Sgl.....	7-15	11-1	2.75	5.20	4.95	4.65	4.40	4.10
10-Week Varieties								
Dreamboat. Lavender pink. M. Pom.....	7-16	11-5	3.00	5.70	5.40	5.10	4.80	4.50
Dark Bulkeley. Dark rose pink. M. Pom.....	7-20	11-8	3.25	6.15	5.85	5.50	5.20	4.85
Dark Linda Lou. Sport of Linda Lou.....	7-20	11-10	2.75	5.20	4.95	4.65	4.40	4.10
Linda Lou. Pink, yellow cushion. M. Anem.....	7-20	11-10	2.75	5.20	4.95	4.65	4.40	4.10
Lulabel. Yellow Cushion. M. Anem.....	7-20	11-10	3.50	6.65	6.30	5.95	5.60	5.25
Miss Clarinda (New). Light lavender. M. Pom.....	7-20	11-10	5.00	9.50	9.00	8.50	8.00	7.50
Pandora (New). Luminous pink. L. Dec.....	7-20	11-10	5.00	9.50	9.00	8.50	8.00	7.50
<i>s</i> Soprano. Pink. M. Sgl.....	7-20	11-10	4.00	7.60	7.20	6.80	6.40	6.00
<i>ps</i> Thyra. Lavender. M. Pom.....	7-19	11-10	3.00	5.70	5.40	5.10	4.80	4.50
<i>d</i> Tuxedo. Pink. L. Anem.....	7-19	11-10	3.25	6.15	5.85	5.50	5.20	4.85
<i>s</i> Masterpiece. Tourmaline pink. M. Pom.....	7-22	11-12	2.75	5.20	4.95	4.65	4.40	4.10
Memorial (New). M. Anem.....	7-22	11-12	5.00	9.50	9.00	8.50	8.00	7.50
Rose Masterpiece. Rose pink sport of Masterpiece....	7-22	11-12	3.50	6.65	6.30	5.95	5.60	5.25
Salmon Masterpiece. Salmon pink sport of Masterpiece....	7-22	11-12	3.50	6.65	6.30	5.95	5.60	5.25
<i>s</i> Taffeta. Deep pink. M. Dec.....	7-22	11-12	4.50	8.55	8.10	7.65	7.20	6.75
11-Week Varieties								
<i>s</i> Brocade. Shell pink. M. Sgl.....	7-24	11-15	2.75	5.20	4.95	4.65	4.40	4.10
<i>d</i> Dark Norma. Deep lavender. L. Anem.....	7-25	11-15	3.25	6.15	5.85	5.50	5.20	4.85
<i>d</i> Freida. Light lavender. L. Anem.....	7-22	11-15	3.00	5.70	5.40	5.10	4.80	4.50
<i>d</i> Norma. Pink petals, salmon cushion. L. Anem.....	7-22	11-15	3.25	6.15	5.85	5.50	5.20	4.85
Mermaid (New). M. Sgl.....	7-25	11-15	5.00	9.50	9.00	8.50	8.00	7.50
<i>p</i> Orchid Beauty. Orchid, golden cushion. M. Anem....	7-22	11-15	2.75	5.20	4.95	4.65	4.40	4.10
Grandslam (New). Silvery shell pink. L. Sgl.....	7-24	11-20	5.00	9.50	9.00	8.50	8.00	7.50
<i>ps</i> Majorette. Pink. M. Anem.....	7-24	11-20	4.50	8.55	8.10	7.65	7.20	6.75
<i>d</i> Pink Long Island Beauty. Pink sport of L. I. Beauty....	7-24	11-20	4.00	7.60	7.20	6.80	6.40	6.00
<i>s</i> Pinky. Pink. M. Dec.....	7-24	11-20	4.50	8.55	8.10	7.65	7.20	6.75
Vivacious Lady (New). Spoon type novelty.....	7-24	11-20	5.00	9.50	9.00	8.50	8.00	7.50
Minuet. Mauve to rose pink. M. Pom.....	7-24	11-23	3.00	5.70	5.40	5.10	4.80	4.50
12-Week Varieties								
<i>pd</i> Beautiful Lady. Lavender. L. Anem.....	7-28	11-25	3.00	5.70	5.40	5.10	4.80	4.50
Hasegawa Pink. Lavender. M. Sgl.....	7-28	11-25	2.50	4.75	4.50	4.25	4.00	3.75
Princess (New). S. Pom.....	7-28	11-25	5.00	9.50	9.00	8.50	8.00	7.50
Usona. Lavender. M. Pom.....	7-28	11-25	2.75	5.20	4.95	4.65	4.40	4.10
<i>d</i> Dark Valencia. Deep pink. M. Sgl.....	8-1	11-28	3.00	5.70	5.40	5.10	4.80	4.50
Orchid Valencia (New) Deep orchid sport of Valencia....	7-28	11-28	5.00	9.50	9.00	8.50	8.00	7.50
Salmon Valencia. Salmon pink sport of Valencia.....	7-28	11-28	5.00	9.50	9.00	8.50	8.00	7.50
<i>d</i> Valencia. Orchid pink. L. Sgl.....	7-28	11-28	3.00	5.70	5.40	5.10	4.80	4.50
Heritage (New). Dark pink. L. Pom.....	7-28	12-1	5.00	9.50	9.00	8.50	8.00	7.50
13-Week Varieties								
<i>d</i> Dark Enchantress. Deep pink sport of Enchantress. L. Anem.....	8-1	12-5	4.00	7.60	7.20	6.80	6.40	6.00
<i>d</i> Enchantress. Deep pink. L. Anem.....	8-1	12-5	3.25	6.15	5.85	5.50	5.20	4.85
<i>d</i> Dark Pink Supreme. Lavender. L. Anem.....	8-2	12-10	3.25	6.15	5.85	5.50	5.20	4.85
Debutante. Large pink single.....	8-1	12-10	4.50	8.55	8.10	7.65	7.20	6.75
Illini Camille. Light pink. M. Sgl.....	8-1	12-10	4.50	8.55	8.10	7.65	7.20	6.75
Ruffled Supreme. Sport of Dark Pink Supreme.....	8-1	12-10	3.25	6.15	5.85	5.50	5.20	4.85
Minstrel. Lavender pink. M. Pom.....	8-1	12-13	3.50	6.65	6.30	5.95	5.60	5.25

POMPONS, SINGLES AND ANEMONES (Continued)

PINK (Continued)

Name and Description	Pinch	Matures	50 per 50	100-250 per 100	300-450 per 100	500-950 per 100	1000-2450 per 100	2500 up per 100
14-Week Varieties								
Coronet. Dark pink. M. Sgl.....	8-1	12-15	\$4.50	\$8.55	\$8.10	\$7.65	\$7.20	\$6.75
Dark Riviera. Sport of Riviera.....	8-10	12-15	3.50	6.65	6.30	5.95	5.60	5.25
Riviera. Luminous pink. M. Dec.....	8-10	12-15	3.00	5.70	5.40	5.10	4.80	4.50
Defiance. True orchid pink. Dec. Pom.....	8-7	12-20	4.00	7.60	7.20	6.80	6.40	6.00
Medallion. Pink. M. Pom.....	8-7	12-20	4.50	8.55	8.10	7.65	7.20	6.75
Pink Treasure Island. Light lavender. M. Dec.....	8-15	12-20	2.50	4.75	4.50	4.25	4.00	3.75
Rosalind. Rose pink. M. Sgl.....	8-5	12-20	2.75	5.20	4.95	4.65	4.40	4.10

New Garden (HARDY) Varieties

MOONLIGHT (DePetris). Sept. 15. Vivid, soft yellow formal Decorative, about 3 in. across. Full, solid flower. Excellent lasting qualities. A free growing variety which may be grown into compact plants by pinching or allowed to grow into a cutting variety.

BRIGADIER (DePetris). Oct. 1. Large, carmine red Pompon. Solid blooms of decorative form. Good, bushy growth and excellent foliage. Stems strong 20 in. to 24 in. Lively color and quite early. Recommended for garden.

MOGUL (DePetris). Oct. 1. Vivid, orange rust, full Decorative of medium size. Vigorous, upright growth.

ENTERPRISE (DePetris). Oct. 1. Rich amaranth pink, pompon suitable for cutting. Medium tall.

AVALON (DePetris). Oct. 1. Formal Pompon of glowing bronze color. Good stems and foliage with upright growth.

PANORAMA (DePetris). Oct. 8. Dazzling orange rust, small decorative 36 in. to 39 in. Small, glossy foliage. Upright growth.

ELIZABETH HOOD (DePetris). Oct. 12. Vivid lavender pink; large, full Pompon with excellent substance and spray formation. Strong stems, 30 in. to 36 in. Vigorous growth. Lush foliage. Excellent for cutting or pots.

NYTODA (DePetris). Oct. 12. Good sized, duplex Daisy. Golden apricot. Makes good sprays on strong stems, 30 in. to 36 in. Good cutting.

Prices all above varieties, each: 50 cuttings for \$7.50, 100-250 cuttings, \$14.50 per 100; 300-450 cuttings, \$14.00 per 100; 500 cuttings or more, \$13.50 per 100

WHITE

Types are abbreviated as follows: Pom.—Pompon; Dec.—Decorative; Sgl.—Single. Size of flower is indicated by S—Small; M—Medium; L—Large.

p—Indicates varieties suitable for pots; *c*—Indicates varieties suitable for cutting.

Note carefully instructions for ordering on page 8. No orders for less than 50 rooted cuttings of a variety accepted. Minimum total order, 500 cuttings

Name and Description	Height	Matures	50 per 50	100-250 per 100	300-450 per 100	500 up per 100
<i>c</i> Candlelight. Cream-white, yellow center. Dec.....	Med.	9-5	\$3.00	\$5.70	\$5.40	\$5.10
<i>p</i> White Cushion. White, shaded pink at center. Cushion.....	Short	9-8	2.75	5.20	4.95	4.65
<i>c</i> D. D. Ahrens. Free flowering, pure white. Dec.....	Tall	9-10	3.00	5.70	5.40	5.10
<i>p</i> Paper White. White. Dec.....	Med.	9-10	4.50	8.55	8.10	7.65
<i>p</i> Chris. Columbus. White with yellow buds. Large Dec.....	Tall	9-15	3.00	5.70	5.40	5.10
Calcite. White with pale yellow center. Heavy bloomer. Dec.....	Med.	9-15	3.00	5.70	5.40	5.10
Drifted Snow. A mound of double white flowers, shaded yellow. Dec.....	Med.	9-15	3.00	5.70	5.40	5.10
<i>p</i> Polar Ice. Pure white, double, 3-in. flowers. L. Dec.....	Med.	9-15	3.50	6.65	6.30	5.95
<i>c</i> White Bounty. White with cream center. Button.....	Tall	9-15	3.50	6.65	6.30	5.95
<i>c</i> White Tower. Cream. L. Pom.....	Tall	9-15	4.00	7.60	7.20	6.80
<i>c</i> White Wonder. Ball-shaped white Pompon. L. Pom.....	Med.	9-25	3.00	5.70	5.40	5.10
Shalimar. Cream. L. Pom.....	Tall	9-25	5.00	9.50	9.00	8.50
<i>c</i> White Cloud. White with delicate pink shading. Dec.....	Tall	9-25	3.00	5.70	5.40	5.10
<i>p</i> Morning Star. Deep cream. Dec.....	Med.	9-25	3.00	5.70	5.40	5.10
Misty Maid. White. Dec.....	Med.	9-25	7.50	14.50	14.00	13.50
Pepita. Eggshell white, darker center. Button.....	Med.	9-29	3.50	6.65	6.30	5.95
Snowfall. White, slight cream center. Dec.....	Med.	9-29	3.50	6.65	6.30	5.95
Ermine. Large, wide petaled ivory white. L. Dec.....	Med.	10-1	4.50	8.55	8.10	7.65
<i>c</i> Winterset. Large white. Dec.....	Med.	10-1	3.25	6.15	5.85	5.50
Avalanche. Cream. L. Dec.....	Tall	10-5	3.25	6.15	5.85	5.50
<i>c</i> Fragrant. Double white; long stems. Dec.....	Tall	10-5	3.25	6.15	5.85	5.50
<i>c</i> Youdath's White. Large flowered, double white. L. Dec.....	Med.	10-5	2.75	5.20	4.95	4.65
Monogram. White, single.....	Short	10-5	4.50	8.55	8.10	7.65
Perfection. Cream. L. Inc.....	Tall	10-10	4.00	7.60	7.20	6.80
<i>c</i> Mrs. Fischer. Double clear white. Pom.....	Tall	10-10	2.75	5.20	4.95	4.65

GARDEN VARIETIES (Continued)—White

Name and Description	Height	Matures	50 per 50	100-250 per 100	300-450 per 100	500 up per 100
Classic. White. Button.....	Tall	10-10	\$4.50	\$8.55	\$8.10	\$7.65
Renown. White Daisy.....	Med.	10-10	4.50	8.55	8.10	7.65
<i>p</i> White Spoon. Pure white.....	Med.	10-10	2.75	5.20	4.95	4.65
<i>c</i> Model O'Perfection. White, cream center. Button.....	Tall	10-15	2.75	5.20	4.95	4.65
Silverplate. Productive outdoor variety. Dec.....	Med.	10-15	4.50	8.55	8.10	7.65
Silver Ball. White. Pom.....	Tall	10-15	2.50	4.75	4.50	4.25
Irene. White, yellow center. Button.....	Med.	10-15	2.75	5.20	4.95	4.65

YELLOW

Butterball. Butter yellow. Low, compact plant. Button.....	Short	9-1	\$3.00	\$5.70	\$5.40	\$5.10
<i>p</i> Early Gold. Golden yellow. Pom.....	Short	9-5	4.00	7.60	7.20	6.80
Yellow Cushion. Light yellow. Cushion.....	Short	9-8	2.75	5.20	4.95	4.65
<i>c</i> Golden Hours. Chrome yellow. Pom.....	Med.	9-8	3.25	6.15	5.85	5.50
<i>c</i> W. P. Snyder. Apricot orange and pink. L. Pom.....	Med.	9-10	3.50	6.65	6.30	5.95
<i>p</i> Pomponette. Excellent early yellow. Pom.....	Short	9-15	3.00	5.70	5.40	5.10
Sunapee. Deep lemon. Pom.....	Tall	9-15	3.25	6.15	5.85	5.50
<i>p</i> Yellow Supreme (H). Bright lemon. Cushion.....	Short	9-15	3.00	5.70	5.40	5.10
<i>p</i> Yellow Chris. Columbus. Bright lemon. L. Dec.....	Med.	9-15	6.25	12.00	11.50	11.00
Yellow Avalanche. Light lemon. L. Dec.....	Tall	9-15	3.25	6.15	5.85	5.50
<i>p</i> Early Yellow. Deep lemon. Button.....	Short	9-15	2.75	5.20	4.95	4.65
Bambi. Fawn yellow, amber center. Dec.....	Med.	9-15	3.25	6.15	5.85	5.50
Defiance (H). Golden yellow, quilled petals. Dec.....	Tall	9-15	3.50	6.65	6.30	5.95
Golden Carpet. Golden yellow. Pom.....	Short	9-15	5.00	9.50	9.00	8.50
Canary Wonder. Canary yellow. Pom.....	Med.	9-15	6.25	12.00	11.50	11.00
<i>p</i> M. J. Costello. Golden yellow, bronze shading. Pom.....	Short	9-20	3.25	6.15	5.85	5.50
Old Gold. An outstanding variety. Golden yellow. Pom.....	Med.	9-20	3.25	6.15	5.85	5.50
<i>p</i> September Sunshine. Semi-double bright yellow.....	Med.	9-20	3.25	6.15	5.85	5.50
Wychwood. Canary yellow. L. Pom.....	Med.	9-20	3.25	6.15	5.85	5.50
<i>c</i> Charles Nye. Deep lemon. L. Pom.....	Tall	9-25	3.25	6.15	5.85	5.50
<i>p</i> Honeycomb. Golden yellow. Pom.....	Med.	9-25	3.00	5.70	5.40	5.10
<i>c</i> Catherine Collins. Lemon yellow. Button.....	Tall	9-25	3.25	6.15	5.85	5.50
Lee Powell. Chinese yellow. L. Dec.....	Tall	9-25	6.25	12.00	11.50	11.00
<i>p</i> Moonlight (New). Disbud. Bright yellow.....	Med.	9-25	7.50	14.50	14.00	13.50
Tangerine. Deep orange. L. Dec.....	Med.	9-25	3.25	6.15	5.85	5.50
Flaxen Beauty. Golden yellow. L. Dec.....	Med.	10-1	6.25	12.00	11.50	11.00
King Midas. Light lemon yellow. L. Dec.....	Med.	10-1	2.75	5.20	4.95	4.65
<i>c</i> Zantha. Canary yellow. Button.....	Med.	10-1	3.25	6.15	5.85	5.50
Chiquita. Deep lemon. Pom.....	Med.	10-1	3.25	6.15	5.85	5.50
<i>c</i> James Eadie. Deep chrome. L. Pom.....	Tall	10-5	3.25	6.15	5.85	5.50
<i>c</i> Polaris. Golden buff. Sgl.....	Tall	10-5	4.50	8.55	8.10	7.65
<i>p</i> Mrs. Rotan. Deep chrome. L. Dec.....	Med.	10-5	3.25	6.15	5.85	5.50
<i>p</i> Yellow Spoon. Light yellow Spoon variety.....	Med.	10-10	2.75	5.20	4.95	4.65
Golden Spoon. Golden yellow.....	Med.	10-10	2.75	5.20	4.95	4.65
Yellow Blanket. Golden yellow Button.....	Med.	10-10	3.25	6.15	5.85	5.50
Bright Forecast. Lemon Pom.....	Med.	10-10	4.50	8.55	8.10	7.65
<i>p</i> Goldrush. Lemon yellow. Sgl.....	Med.	10-10	4.50	8.55	8.10	7.65
Nytoda (New). Golden apricot. Sgl.....	Med.	10-12	7.50	14.50	14.00	13.50
<i>p</i> Lemonade. Ivory yellow. Pom.....	Med.	10-15	4.50	8.55	8.10	7.65
<i>p</i> Judith Anderson. Golden yellow. Button.....	Med.	10-15	2.75	5.20	4.95	4.65
Rodell Imp. Light lemon. Button.....	Med.	10-15	2.50	4.75	4.50	4.25
Sweepstake. Lemon. Pom.....	Med.	10-15	4.50	8.55	8.10	7.65
Yellow Irene. Light lemon. Button.....	Med.	10-15	2.75	5.20	4.95	4.65

BRONZE and RED

Early Harvest. Mahogany-orange. Cushion.....	Short	9-8	\$3.25	\$6.15	\$5.85	\$5.50
Harbinger. Golden bronze. Dec.....	Med.	9-8	3.25	6.15	5.85	5.50
<i>p</i> Early Bronze. Orange bronze. Button.....	Short	9-8	2.75	5.20	4.95	4.65
Autumn Song. Wine-rose. Dec.....	Med.	9-10	3.25	6.15	5.85	5.50
<i>c</i> Red Gold. Red and gold. Button.....	Med.	9-15	3.25	6.15	5.85	5.50
September Bronze. Golden bronze. Frost resistant. Button.....	Med.	9-20	2.75	5.20	4.95	4.65
Goblin. Golden bronze. Pom.....	Tall	9-20	2.75	5.20	4.95	4.65
Red Glow. Dark red. Pom.....	Med.	9-20	4.00	7.60	7.20	6.80
Scarlet Crimson. Bright red. Dec.....	Med.	9-20	3.25	6.15	5.85	5.50
Mandalay. Orange bronze. Pom.....	Tall	9-25	3.25	6.15	5.85	5.50
Champion Cushion. Deep bronze. Cushion.....	Short	9-25	2.75	5.20	4.95	4.65
Commander Cushion. Best red Cushion.....	Short	9-25	2.75	5.20	4.95	4.65

GARDEN VARIETIES (Continued)—Bronze and Red

Name and Description	Height	Matures	50 per 50	100-250 per 100	300-450 per 100	500 up per 100
Mahogany Cushion. Jasper red.	Short	9-25	\$4.00	\$7.60	\$7.20	\$6.80
Marionette. Rust red. Pom.	Med.	9-25	4.50	8.55	8.10	7.65
Remembrance. Deep carmine. L. Dec.	Med.	9-28	5.00	9.50	9.00	8.50
<i>c</i> Kathleen Lehman. Orange bronze. L. Dec.	Med.	9-28	5.00	9.50	9.00	8.50
Mayford's Triumph. Scarlet bronze. L. Inc.	Tall	9-28	4.00	7.60	7.20	6.80
Fiesta. Orange rust. Pom.	Med.	10-1	3.50	6.65	6.30	5.95
Inspiration. Apricot-orange. L. Dec.	Tall	10-1	3.25	6.15	5.85	5.50
<i>c</i> Magnificent. Plum red. L. Dec.	Tall	10-1	3.50	6.65	6.30	5.95
Red Riding Hood. Bright red; frost resistant. Dec.	Med.	10-1	3.25	6.15	5.85	5.50
Sam Williston. Fiery red. Cushion.	Short	10-1	2.75	5.20	4.95	4.65
<i>cp</i> Bonfire. Bright red. Dec.	Med.	10-1	3.50	6.65	6.30	5.95
Mogul (New). Orange rust. Pom.	Med.	10-1	7.50	14.50	14.00	13.50
Brigadier (New). Carmine red. L. Pom.	Med.	10-1	7.50	14.50	14.00	13.50
Cardinal Spoon. Cardinal red, yellow tube. Spoon.	Med.	10-1	3.50	6.65	6.30	5.95
Avalon (New). Orange bronze. Pom.	Tall	10-5	7.50	14.50	14.00	13.50
<i>c</i> Cydonia. Mahogany red. L. Dec.	Tall	10-5	2.75	5.20	4.95	4.65
<i>c</i> Meditation. Jasper red. L. Pom.	Tall	10-5	3.25	6.15	5.85	5.50
<i>p</i> September Cheer. Cherry red. Sgl.	Med.	10-5	2.75	5.20	4.95	4.65
<i>c</i> Burgundy. Wine red. L. Dec.	Tall	10-5	2.75	5.20	4.95	4.65
Ruby Pompon. Ruby crimson. Pom.	Med.	10-5	2.75	5.20	4.95	4.65
<i>p</i> Red Velvet. Dark crimson. L. Dec.	Med.	10-5	3.25	6.15	5.85	5.50
<i>p</i> Mona. Rust bronze. Pom.	Med.	10-5	4.50	8.55	8.10	7.65
Courageous. Dark ruby. Frost resistant. L. Dec.	Med.	10-5	3.25	6.15	5.85	5.50
Sequoia. Light amber. L. Dec.	Med.	10-5	2.75	5.20	4.95	4.65
Panorama (New). Orange rust. Dec.	Tall	10-8	7.50	14.50	14.00	13.50
Aviator. Copper. Pom.	Med.	10-8	3.25	6.15	5.85	5.50
<i>cp</i> Amber Glow. Rosy bronze. L. Dec.	Tall	10-8	3.25	6.15	5.85	5.50
The Chief. Scarlet and gold. Dec.	Med.	10-10	2.75	5.20	4.95	4.65
<i>p</i> James Stewart. Apricot-gold. Pom.	Tall	10-10	4.50	8.55	8.10	7.65
Huntsman. Scarlet orange. L. Dec.	Tall	10-10	4.50	8.55	8.10	7.65
<i>c</i> Airway Debut. Golden bronze. L. Dec.	Med.	10-10	3.25	6.15	5.85	5.50
Bokhara. Crimson. Dec.	Med.	10-10	4.00	7.60	7.20	6.80
<i>pc</i> Carnival. Burnt orange. L. Pom.	Med.	10-10	3.50	6.65	6.30	5.95
<i>c</i> Carmine Queen. Carmine. L. Pom.	Tall	10-10	4.50	8.55	8.10	7.65
<i>p</i> Bamboo. Buff orange. Sgl.	Tall	10-10	4.50	8.55	8.10	7.65
<i>p</i> Calico. Coral bronze. Sgl.	Tall	10-10	4.50	8.55	8.10	7.65
Fireside. Burnt orange. Dec.	Tall	10-10	4.50	8.55	8.10	7.65
Fashion. Salmon and rosewood. Dec.	Med.	10-12	4.50	8.55	8.10	7.65
<i>p</i> Witchery. Golden bronze. Dec.	Med.	10-12	4.50	8.55	8.10	7.65
Nokomis. Reddish bronze. L. Dec.	Med.	10-12	4.50	8.55	8.10	7.65
Nocturne. Crimson. Pom.	Med.	10-12	4.50	8.55	8.10	7.65
Robinhue. Dark red. L. Dec.	Tall	10-15	4.50	8.55	8.10	7.65
<i>c</i> Beacon. Coral apricot. L. Dec.	Tall	10-15	4.50	8.55	8.10	7.65
<i>c</i> Bronze Pyramid. Orange bronze. L. Dec.	Tall	10-15	3.25	6.15	5.85	5.50
<i>p</i> Carmelita. Apricot bronze. L. Dec.	Tall	10-15	4.50	8.55	8.10	7.65

PINK

Gladness. China rose. Dec.	Short	8-28	\$3.50	\$6.65	\$6.30	\$5.95
<i>c</i> Dr. Longley. Rose pink. Dec.	Med.	9-1	4.50	8.55	8.10	7.65
Salmon Precose. Salmon pink. L. Dec.	Short	9-1	3.50	6.65	6.30	5.95
Welcome. Mallow-purple. Sgl.	Med.	9-1	2.75	5.20	4.95	4.65
Ambrosia. Peach pink. Dec.	Med.	9-5	3.50	6.65	6.30	5.95
Purple Star. Star appearance. Dahlia purple. Pom.	Med.	9-5	2.75	5.20	4.95	4.65
<i>p</i> Major Cushion. Deep lavender Cushion.	Short	9-8	2.75	5.20	4.95	4.65
<i>c</i> Barbara Small. Pinkish lavender. Pom.	Tall	9-10	3.25	6.15	5.85	5.50
<i>c</i> Lavender Lassie. Light lavender. Cushion.	Short	9-10	5.00	9.50	9.00	8.50
<i>c</i> Nye's Favorite. Lavender. Dec.	Med.	9-10	3.50	6.65	6.30	5.95
Orchid Helen. Orchid lavender. Dec.	Med.	9-10	5.00	9.50	9.00	8.50
Chippewa. Bright purple. L. Dec.	Med.	9-15	3.25	6.15	5.85	5.50
<i>c</i> Violet. Amaranth pink. Pom.	Med.	9-15	3.25	6.15	5.85	5.50
Pink Princess. Light pink. Button.	Med.	9-20	3.50	6.65	6.30	5.95
Achievement. Deep salmon. Dec.	Short	9-20	3.25	6.15	5.85	5.50
Fairbow. Lavender pink. Pom.	Med.	9-20	3.50	6.65	6.30	5.95
Tapestry. Bright pink. L. Dec.	Med.	9-20	5.00	9.50	9.00	8.50
Heather Bloom. Heather pink. Dec.	Med.	9-20	3.00	5.70	5.40	5.10

GARDEN VARIETIES (Continued)—Pinks

Name and Description	Height	Matures	50 per 50	100-250 per 100	300-450 per 100	500 up per 100
Alert. Dark purple. L. Dec.....	Med.	9-20	\$4.00	\$7.60	\$7.20	\$6.80
Olive Longland. Apricot-salmon. L. Dec.....	Med.	9-25	2.50	4.75	4.50	4.25
Capt. J. Smith. Lavender-pink. Cushion.....	Short	9-25	2.75	5.20	4.95	4.65
<i>c</i> Pink Beauty. Salmon pink. Dec.....	Med.	9-25	2.75	5.20	4.95	4.65
September Dawn. Rose pink. Dec.....	Med.	9-25	3.00	5.70	5.40	5.10
Rosita. Persian Rose. Button.....	Med.	9-25	3.25	6.15	5.85	5.50
<i>c</i> Betty. Pink, rose center. L. Dec.....	Tall	9-28	3.25	6.15	5.85	5.50
Imp. Early Wonder. Deep lavender. Pom.....	Med.	9-28	3.00	5.70	5.40	5.10
<i>c</i> Pat. Lehmann. Peach pink. Dec.....	Tall	9-28	5.00	9.50	9.00	8.50
Coral Sea. Buff rose. Dec.....	Med.	10-1	2.75	5.20	4.95	4.65
Early Wonder. Lavender. M. Pom.....	Med.	10-1	3.00	5.70	5.40	5.10
Myrtle Walgreen. Amaranth purple. L. Pom.....	Med.	10-1	3.50	6.65	6.30	5.95
<i>c</i> Spellbound. Lavender-pink. Dec.....	Med.	10-1	3.25	6.15	5.85	5.50
<i>p</i> Tiffany Rose. Deep rose. Sgl.....	Med.	10-1	2.75	5.20	4.95	4.65
Enterprise (New). Amaranth. Pom.....	Tall	10-5	7.50	14.50	14.00	13.50
<i>p</i> Mrs. DuPont. Peach pink. L. Dec.....	Tall	10-5	2.75	5.20	4.95	4.65
Pink Surprise. Lavender. Dec.....	Tall	10-5	4.00	7.60	7.20	6.80
<i>p</i> Lavender Lady. Lavender pink. Dec.....	Tall	10-5	3.50	6.65	6.30	5.95
<i>c</i> Mellow Glow. Peach pink. Pom.....	Tall	10-5	3.50	6.65	6.30	5.95
Dream Girl. Light lavender. Pom.....	Med.	10-10	4.00	7.60	7.20	6.80
Argonne. Dark lavender. Pom.....	Med.	10-10	4.00	7.60	7.20	6.80
Orchid Spoon. Orchid lavender. Spoon.....	Med.	10-10	2.75	5.20	4.95	4.65
Rose Spoon. Lavender rose. Spoon.....	Med.	10-10	2.75	5.20	4.95	4.65
Masquerade. Lavender rose. Pom.....	Med.	10-10	3.50	6.65	6.30	5.95
Joybringer. Salmon rose. Dec.....	Short	10-10	4.50	8.55	8.10	7.65
Winsome. Lavender purple. L. Ref.....	Tall	10-10	4.00	7.60	7.20	6.80
Sweetheart. Light lavender. Sgl.....	Tall	10-10	4.50	8.55	8.10	7.65
Serenade. Magenta. Sgl.....	Tall	10-10	4.50	8.55	8.10	7.65
Elizabeth Hood (New). Lavender pink. L. Pom.....	Med.	10-12	7.50	14.50	14.00	13.50
Salute. Deep orchid. Sgl.....	Tall	10-12	4.50	8.55	8.10	7.65
<i>c</i> Allegro. Shrimp pink. Pom.....	Tall	10-12	3.25	6.15	5.85	5.50
Adagio. Raspberry rose. Pom.....	Tall	10-12	4.50	8.55	8.10	7.65
Dawn Rose. Grenadine pink. L. Dec.....	Med.	10-15	4.00	7.60	7.20	6.80
Symphony. Mauve and lavender. Dec.....	Tall	10-15	2.75	5.20	4.95	4.65
<i>p</i> Jewell. Lavender pink. Pom.....	Med.	10-15	3.00	5.70	5.40	5.10
<i>p</i> Dark Jewell. Dark lavender. Pom.....	Med.	10-15	3.00	5.70	5.40	5.10

SPECIAL COLLECTIONS of GARDEN VARIETIES

POT PLANT COLLECTION Special Offer No. 4

500 Rooted Cuttings for Mother's Day
Our Selection

Price, 500 cuttings.....\$25.00

Garden Varieties for Pot Plants

Consider the Garden Mums as Spring pot plants. The collection described at the left consists of varieties particularly suited to Spring pot plant forcing. The obvious selling point is that these flowering pot plants may be pinched back and planted outdoors for Fall flowering in the garden.

See page 5 for complete directions for handling garden varieties for May pot plants.

Combination Offers

SPECIAL OFFER NO. 1

500 Rooted Cuttings, our selection—50 each of 10 taller varieties for cutting.....\$25.00

SPECIAL OFFER NO. 2

500 Rooted Cuttings, our selection—50 each of 10 medium to short varieties for pots or bedding—\$25.00

SPECIAL OFFER NO. 3

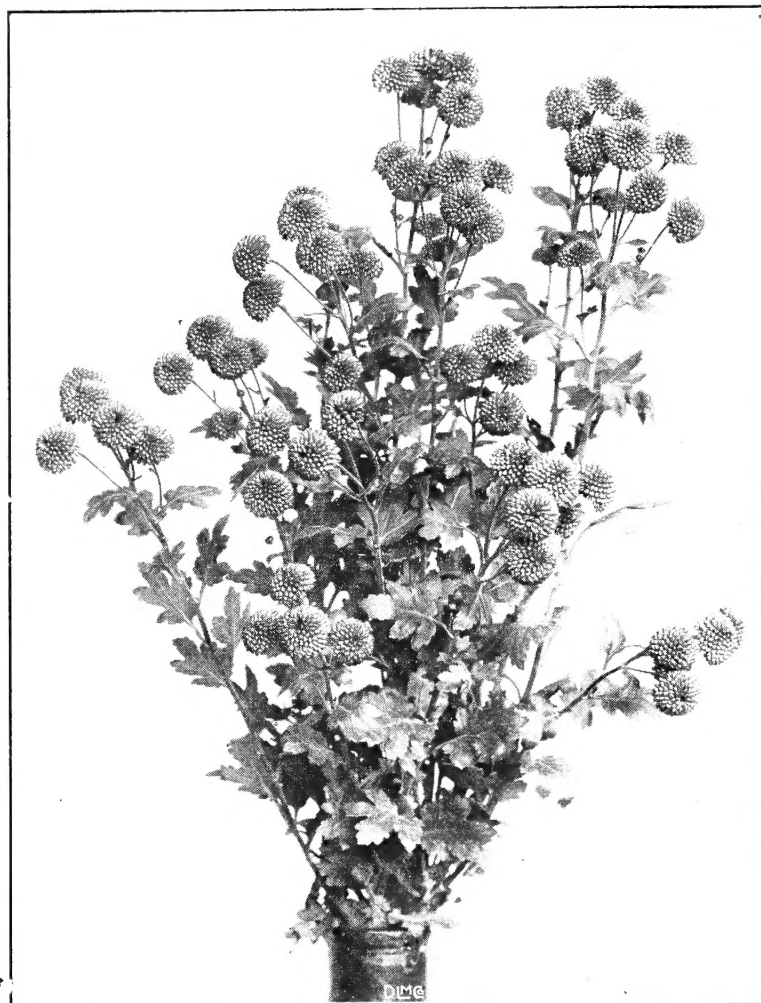
500 Rooted Cuttings, our selection—50 each of 5 varieties for cutting, 50 each of 5 varieties for bedding—\$25.00

Fleck's

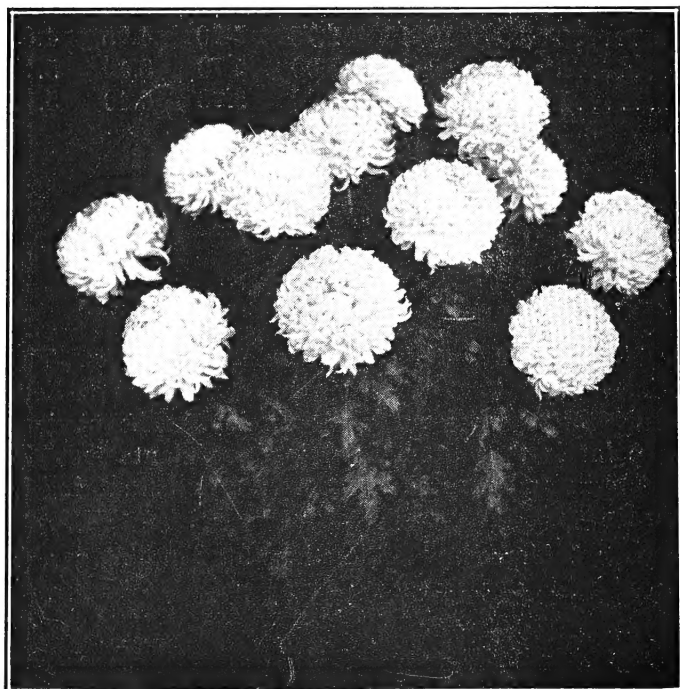
CHRYSANTHEMUMS



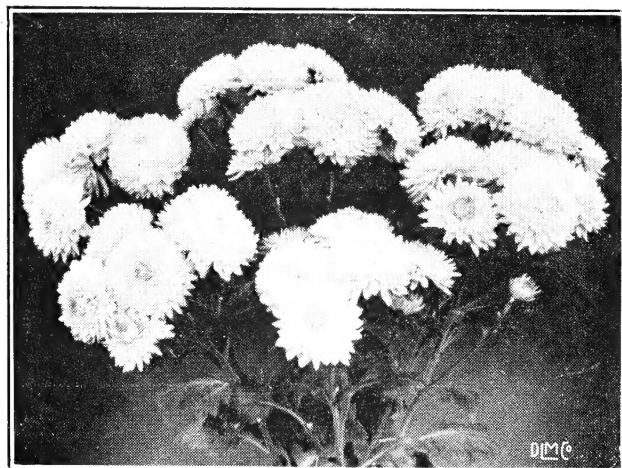
Omega



Pompons



Standards



Lillian Doty

RAYMOND A. FLECK, Inc.

"The House of Friendly Service"

1042 Allengrove Street

Phone JEfferson 5-0568

WAREHOUSES
PHILADELPHIA

PHILADELPHIA 24, PA.

Phone Orders, 8:30 A.M. to 10 P.M.